

british ceramic tile

# TILE COLLECTION.





ABOUT US...

# WE EAT, SLEEP AND BREATHE DESIGN.

From an intricate detail to a bold, patterned statement, we're passionate about bringing you the best in tiles and interior inspiration. Whether you're looking for fresh ideas, or need to blend in with a current scheme, we're confident we can help.

We're proud of our long-standing British heritage, developed into a world-class manufacturing facility, and are now the largest manufacturer of ceramic tiles in the UK.

At the heart of all we do lies design and innovation. Classic tradition meets state-of-the-

art technology as our creative team translate trends into beautiful interiors, and it's interesting stuff.

The environment's a pretty big deal to us too. We use local materials, recycle and cut back on waste wherever we can. After all, we've only got one planet and we're committed to looking after it.

So be it ceramic for your bathroom, porcelain for your hallway or a glass splashback for your kitchen, we're sure we've got something you're going to fall for. In fact, we work with partners all around the world to make that happen.

## PROUDLY MADE IN BRITAIN

We're proud to have been manufacturing tiles at our Devon factory for over 100 years. Attention to detail is all part of our proud British personality. Call us perfectionists, we're proud that we allow nothing to get overlooked.

## BRAVERY IS THE GLINT IN OUR EYE

Less ordinary, more extraordinary. We've got a fire within us that spurs us on to challenge the norms of design, manufacturing and sustainability. Be brave, go bold.

## INNOVATION IS IN OUR DNA

From design and manufacturing to delivering intelligent customer solutions, we never stop striving to create clever products that work for all different projects and all types of customer.

## COLLABORATION DRIVES US FORWARD

Teamwork creates brilliant results and we are proud to share our knowledge, expertise and passion which extends to our collaborations with the UK's most talented designers.



# CONTENTS.

The Trend Edit	05	HD Laurel Marble	143
HD Introduction	09	Legend Porcelain	145
HD Accolade	11	Luna	147
HD Astbury	13	Loft	149
Blend	15	Lustre	151
Brighton	19	Metro	153
Brecon & Bretton	23	HD Medal	155
Brooklyn	25	Mijares	157
Buxton	27	HD Mimeo	159
Cappuccino	29	Mono Porcelain	163
HD Chameleon	31	Mosaics	165
The Colour Compendium	33	Mountain	173
Conglomerate	35	Mumbai	175
HD Concrete	37	New Brighton	177
Tiles by Studio Conran	39	Ondulato	179
Cookhouse Character	47	HD Paragon	181
Cosmopolitan	49	HD Parallel	183
Dartmoor Naturals	51	Parian	189
Devonstone	53	Queenstown	191
HD Distressed Wood	57	Rapolano	193
HD Ditto	59	Rock	197
Dorchester	61	Seaton	201
Elite Stone	63	HD Serpentine	203
Elgin Marbles	65	Shift	207
Eos Lustre	67	HD Slate	209
Extreme Porcelain	69	Splendid	211
Feature Floors	71	HD Snowdonia	213
Function & Form	81	Sublime	215
HD Galvanised	91	Tanner	217
HD Gecko	93	Ted Baker	219
HD Geneva	95	Timbao	233
HD Gravity	97	HD Trophy	235
HD Harmony	99	V&A	237
Hex	101	Vasanello	265
Horizon Porcelain	103	Vintage Wood	267
Impact Glass	105	Everyday Whites	269
Industrial	111	Willow	271
HD Insignia	113	HD Wood	273
Keystone	115	Technical Information	275
Laura Ashley	117		
Laura Ashley Splashbacks	135		

# THE TREND EDIT.

Surfaces in 2018 have a tactile quality with texture and pattern everywhere from tableware through to ceramics. With a two-dimensional quality, these surface patterns are discreet in their execution, bringing visual intrigue to design schemes within an organic, natural colour palette.

## *Sumptuous* SURFACES



Ceramics are full of sculptural detail including pleats, folds and gentle forms. Design references take their cue from the ancient art of origami with geometric patterns transforming the plain and understated into works of art.



# Mineral *Rich*

Interiors are awash with stunning colour gradients and painterly effects. Following on from Abstraction, Mineral Rich extends the look taking inspiration from nature – think beautiful landscapes, deep blue seas and stormy skies. Patterns reflect mineral forms with soft flowing lines and **colour washes** recreating a feeling of wellbeing and calm. Designs build as colours intensify and interweave, **creating layers of interest**.

Earthy, washed out tones of blue and green are married with rich jewel shades of jade and amethyst toned down by a neutral backdrop of white, grey and beige, allowing the pattern to take centre stage. A **holistic approach to interiors** and accessories gives an overall feeling of serenity and tranquility. Discreetly coloured marbles and patterned earthenware typify the trend with materials such as wood and velvet delivering an extra dimension.



# Interior Scaping

While some trends can be fully embraced, others are more of a style reference allowing elements to be incorporated into wider design projects.

Loud and proud with its oversized **tropical prints and botanical beauty**, Interior Scaping is the perfect example of a style that can be scaled up or toned down. Chaotic in its delivery, the look takes its design cues from **hot, balmy climates, exotic paradises and urban jungles**.

Patterns and prints are bold and not for the faint hearted, bringing with them a **retro feel**. Leafy palms, oversized plants and foliage are integral to the overall design scheme and can be seen widely in wallpaper designs and soft furnishings - acting as the focal point of a room. **Vibrant crisp greens**, which bring a sense of wellbeing and harmony, are offset by luxe metallic detail for a look that is adventurous and fresh, bringing a sense of the outdoors in.







TECHNOLOGY

british ceramic tile

# LIFE LOOKS BETTER IN HD.

## REDEFINING WHAT'S POSSIBLE IN TILES.

Didn't think you could create an amazing stone, wood & graphic look using tiles?

You can with our **HD range** - created using the very latest high definition inkjet technology.

- ◆ Emulate the look of natural stone and marble
- ◆ No sealing required
- ◆ Easy to install, clean and maintain
- ◆ Printed using the latest HD technology

### 3D HD

3D HD uses the same HD technology that we have become known for but it is applied to a 3D tile allowing us to continue to emulate real textures but now with an extra dimension.

### HD ULTRA

HD Ultra is a step up of the HD technology adding four times the resolution in the development and manufacturing process. The Ultra technology gives an increased depth and format to the finished product.



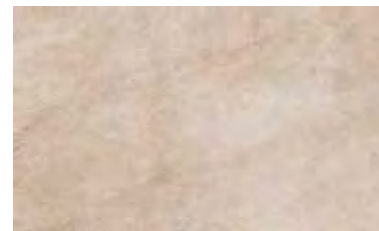


TECHNOLOGY

british ceramic tile

# ACCOLADE.

An elegant wave effect ceramic tile available in two matt colourways with complementing Wall and Floor riven tiles created using the latest HD technology.



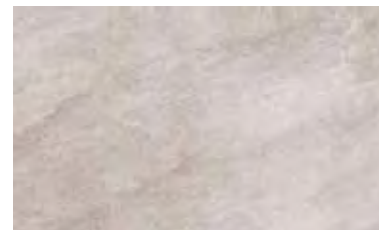
**BCT47032**

Oak Riven  
Wall and Floor  
298x498mm  
M0009



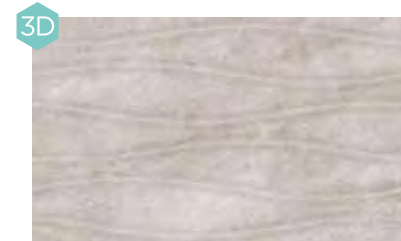
**BCT47025**

Oak Wave  
Wall  
298x498mm  
M0009D



**BCT47117**

Grey Riven  
Wall and Floor  
298x498mm  
M0009



**BCT47100**

Grey Wave  
Wall  
298x498mm  
M0009D







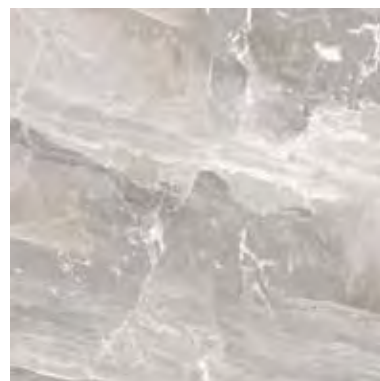
**BCT41719**  
Beige Wall  
248x498mm  
10009  
 



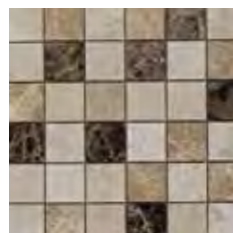
**BCT41726**  
Grey Wall  
248x498mm  
10009  
 



**BCT41733**  
Beige Floor  
498x498mm  
P0009  
  



**BCT41740**  
Grey Floor  
498x498mm  
P0009  
  



**BCT38528**  
Beige/Emperor  
Polished Mosaic  
305x305mm  
W0017A  
 



**BCT38375**  
Black Hammered  
Glass Mosaic  
305x305mm  
W0004A  




TECHNOLOGY  
british ceramic tile

# ASTBURY.

The striking Astbury marble effect range is created using the latest HD technology.



Ideal for large  
areas or use  
outdoors

# BLEND.

With graded neutral shades and timeless quality, Blend offers versatility and an effortless feel. Showcasing a selection of large format porcelain, the R11 and R10 slip rating makes these tiles ideal for large areas inside or out.



**BCT44918**  
Mid Grey Bush Hammered  
Wall and Floor  
600x600mm  
Q0022 - R11  
P M



**BCT45106**  
Mid Grey Bush Hammered  
Wall and Floor  
300x600mm  
N0022 - R11  
P M



**BCT44963**  
Mid Grey Bush Hammered  
Mosaic Wall and Floor  
300x600mm  
W0022 - R10  
P M

Peace of mind  
with a high  
slip rating of  
R10 or R11



**BCT45090**  
Sand Bush Hammered  
Wall and Floor  
600x600mm  
Q0022 - R11  
P M



**BCT45120**  
Sand Bush Hammered  
Wall and Floor  
300x600mm  
N0022 - R11  
P M



**BCT45168**  
Sand Bush Hammered  
Mosaic Wall and Floor  
300x600mm  
W0022 - R10  
P M

3 colours  
in the range

Ideal for large areas or use outdoors

Peace of mind with a high slip rating of R10 or R11



**BCT45007**  
Graphite Bush Hammered  
Wall and Floor  
600x600mm  
Q0022 - R11  
 



**BCT44932**  
Graphite Bush Hammered  
Wall and Floor  
300x600mm  
N0022 - R11  
 



**BCT45069**  
Graphite Bush Hammered  
Mosaic Wall and Floor  
300x600mm  
W0022 - R11  
 



# BLEND.

With graded neutral shades and timeless quality, Blend offers versatility and an effortless feel. Showcasing a selection of large format porcelain, the R11 and R10 slip rating makes these tiles ideal for large areas inside or out.





# BRIGHTON.

Contemporary ceramic wall tiles with a gloss finish and linear design with co-ordinating floor options.



**BCT12238**

White Wall  
248x398mm  
H0003



**BCT14584**

Ivory Wall  
248x398mm  
H0003



**BCT14591**

Beige Wall  
248x398mm  
H0003



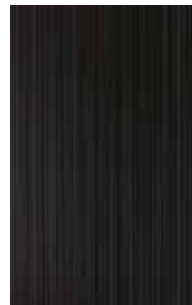
**BCT14560**

Truffle Wall  
248x398mm  
H0003



**BCT14577**

Grey Wall  
248x398mm  
H0003



**BCT12207**

Black Wall  
248x398mm  
H0003



[www.britishceramictile.com](http://www.britishceramictile.com) | Tel. 08450551275 | [enquiries@britishceramictile.com](mailto:enquiries@britishceramictile.com)

Porcelain Natural Stone Ceramic Gloss Matt Satin Wear Rating



**BCT17417**  
White Floor  
331x331mm  
K0003  
C G PEI 4



**BCT20837**  
Ivory Floor  
331x331mm  
K0003  
C G PEI 4



**BCT20868**  
Grey Floor  
331x331mm  
K0003  
C G PEI 4



**BCT20844**  
Beige Floor  
331x331mm  
K0003  
C G PEI 4



**BCT20851**  
Truffle Floor  
331x331mm  
K0003  
C G PEI 4



**BCT14614**  
Shine Warm Strip  
398x50mm  
X0003  
C G



# BRIGHTON.

Contemporary ceramic wall tiles with a gloss finish and linear design with co-ordinating floor options.





# BRECON.

Brecon porcelain floor tile is a slate effect tile with a very subtle texture.



**ISC2840**  
Black Floor  
330x600mm  
N0008  
P M



**ISC3484**  
Cream Floor  
400x600mm  
O0007  
P M PEI 4



**ISC3485**  
Beige Floor  
400x600mm  
O0007  
P M PEI 4

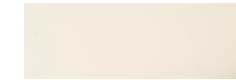
# BRETTON.

A natural stone effect matt floor tile made from hard wearing porcelain.



# BROOKLYN.

Contemporary ceramic oblong tiles. This range has been specifically designed for wall use in different shades, which allow for traditional or contemporary combinations.



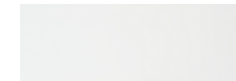
**ISC2819**  
Cream Wall  
100x300mm  
D0002  
C G



**ISC2820**  
Black Wall  
100x300mm  
D0002  
C G



**ISC2821**  
Grey Wall  
100x300mm  
D0002  
C G



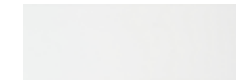
**ISC2818**  
White Wall  
100x300mm  
D0002  
C G



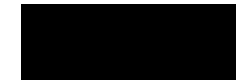
**BCT48688**  
Mode Dark Grey Wall  
100x300mm  
D0002  
C M



**BCT48695**  
Mode Light Grey Wall  
100x300mm  
D0002  
C M

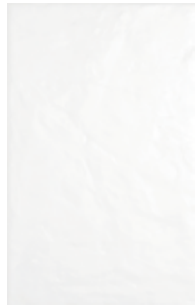


**BCT48701**  
Mode White Wall  
100x300mm  
D0002  
C M



**BCT48718**  
Mode Black Wall  
100x300mm  
D0002  
C M

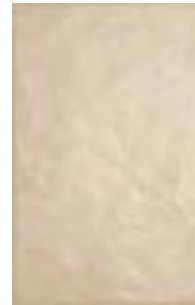




**CAN42933**  
White Wall  
248x398mm  
H0002  
C S



**CAN42940**  
Light Beige Wall  
248x398mm  
H0002  
C S



**CAN42957**  
Dark Beige Wall  
248x398mm  
H0002  
C S



**BCT10340**  
Marble Beige Mosaic  
302x302mm  
W0008A  
NS S



**BCT10357**  
Marble Black/White Mosaic  
302x302mm  
W0008A  
NS S

### DID YOU KNOW?

One mosaic strip will create 6 borders, easily cut at home.

# BUXTON.

Textured wall tiles in a satin finish with complementary border strips and matching ceramic floor tiles.

# CAPPUCCINO.

A beautiful stone effect range of wall and floor ceramic tiles printed using the latest technology to emulate the look of real stone.



## BCT04059

Light Beige Wall and Floor  
298x498mm  
M0002



## BCT04066

Dark Beige Wall and Floor  
298x498mm  
M0002



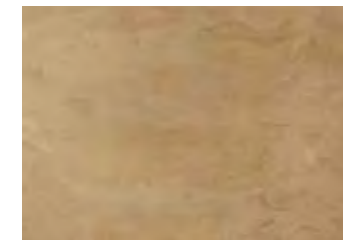
## BCT10333

Marble Beige Mosaic  
325x325mm  
W0007C



## ISC3012

Crema Wall  
310x450mm  
L0003



## ISC3011

Almond Wall  
310x450mm  
L0003



## ISC3014

Crema Floor  
450x450mm  
P0007



## ISC3013

Almond Floor  
450x450mm  
P0007



## ISC3018

Crema Border  
48x333mm  
X0019



## ISC3017

Almond Border  
48x333mm  
X0019







TECHNOLOGY

british ceramic tile

# CHAMELEON.

Sumptuous marble effect ceramic tiles featuring a contemporary colour palette created using the latest HD technology.



**BCT21476**

Grey Wall and Floor  
298x498mm  
M0009



**BCT12108**

Beige Wall and Floor  
298x498mm  
M0009



**BCT21483**

White Wall and Floor  
298x498mm  
M0009



**BCT38528**

Beige/Emperador  
Polished Mosaic  
305x305mm  
W0017A



Complementary  
natural stone  
mosaic detail

[www.britishceramictile.com](http://www.britishceramictile.com) | Tel. 08450551275 | [enquiries@britishceramictile.com](mailto:enquiries@britishceramictile.com)

Porcelain Natural Stone Ceramic Gloss Matt Satin Wear Rating

# COLOUR COMPENDIUM

FROM  
british ceramic tile

# COLOURS.

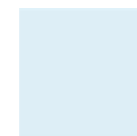
The Colour Compendium is a complete range of coloured ceramic tiles in gloss, satin and textured finishes.



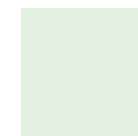
**BCT56546**  
Cobalt Blue  
Wall  
148x148mm  
E0003  
C G



**BCT56515**  
Mint  
Wall  
148x148mm  
E0002  
C G



**BCT56652**  
Sky Blue  
Wall  
148x148mm  
E0002  
C G



**BCT56669**  
Pale Aqua  
Wall  
148x148mm  
E0002  
C G



**BCT56553**  
Smoke Grey  
Wall  
148x148mm  
E0002  
C G



**BCT56560**  
Dove Grey  
Wall  
148x148mm  
E0002  
C S



**BCT56690**  
Pigeon Satin  
Wall  
148x148mm  
E0002  
C S



**BCT56638**  
Turin Beige  
Wall  
148x148mm  
E0003  
C S



**BCT56621**  
Turin Charcoal  
Wall  
148x148mm  
E0003  
C S



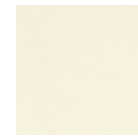
**BCT56614**  
Turin Grey  
Wall  
148x148mm  
E0003  
C S



**BCT56607**  
Turin white  
Wall  
148x148mm  
E0003  
C S



**BCT56522**  
Barley  
Wall  
148x148mm  
E0002  
C G



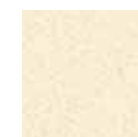
**BCT56645**  
Cream Gloss  
Wall  
148x148mm  
E0002  
C G



**BCT56584**  
Ivory  
Wall  
148x148mm  
E0002  
C G



**BCT56683**  
Black Speckle  
Wall  
148x148mm  
E0002  
C G



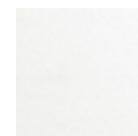
**BCT56676**  
Cream Speckle  
Wall  
148x148mm  
E0002  
C G



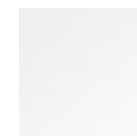
**BCT56706**  
Salt n Pepper  
Wall  
148x148mm  
E0002  
C G



**BCT56539**  
Jet Black  
Wall  
148x148mm  
E0002  
C G



**BCT56577**  
White Satin  
Wall  
148x148mm  
E0002  
C S



**BCT55143**  
White Gloss  
Wall  
148x148mm  
E0002  
C G

All tiles are  
148x148mm  
square

13 gloss and  
7 satin colours  
to choose from



# CONGLOMERATE.

With a modern twist on a traditional terrazzo design, Conglomerate is a range of four understated floor and wall tiles and an elegant feature floor to complement the look. The whites and greys with added lustre effect gives a subtle glow. Create a feature in any room.

Transform any living space. Create classic beauty



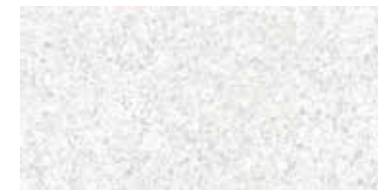
**BCT56768**  
White  
Floor  
331x331mm  
K0010  
C S PEI 4



**BCT56812**  
Feature  
Floor  
331x331mm  
K0010  
C S PEI 4



**BCT56980**  
Dark Grey  
Floor  
331x331mm  
K0010  
C S PEI 4



**BCT56829**  
White  
Wall  
248x498mm  
I0003  
C S



**BCT56997**  
Dark Grey  
Wall  
248x498mm  
I0003  
C S





TECHNOLOGY

british ceramic tile

# CONCRETE.

Urban effect wall and floor tiles with matching feature floor in shades of grey.



**BCT14362**

Light Grey Wall  
248x498mm  
I0009



**BCT14379**

Mid Grey Wall  
248x498mm  
I0009



**BCT14386**

Dark Grey Wall  
248x498mm  
I0009



**BCT14393**

Light Grey  
Floor  
331x331mm  
K0009



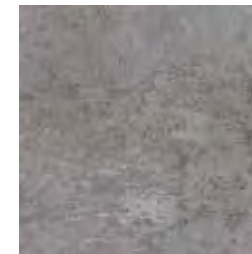
**BCT14409**

Mid Grey  
Floor  
331x331mm  
K0009



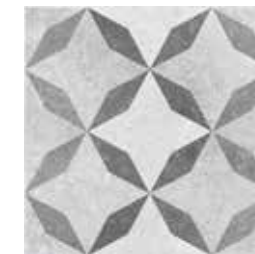
**BCT49449**

Square Mosaic Grey  
Wall and Floor  
300x300mm  
W0006C



**BCT14416**

Dark Grey  
Floor  
331x331mm  
K0009



**BCT14423**

Concrete Feature  
Floor  
331x331mm  
K0008



**BCT49456**

Hexagon Mosaic  
Wall and Floor  
285x296mm  
W0008A



[www.britishceramictile.com](http://www.britishceramictile.com) | Tel. 08450551275 | [enquiries@britishceramictile.com](mailto:enquiries@britishceramictile.com)

Porcelain Natural Stone Ceramic Gloss Matt Satin Wear Rating



# TILES BY STUDIO CONRAN

— BROUGHT TO YOU BY —  
british ceramic tile

## LINEA FLOW.

Inspired by the gentle irregularity of a hand drawn line, and the organic, linear structures that occur in nature, Flow softens an otherwise hard surface. A satin glaze accentuates the generous depth of the structure.



**RAN00682**  
Flow White  
Wall  
248x498mm  
I00012  
CM



**RAN00699**  
Flow Smoke  
Wall  
248x498mm  
I00012  
CM



**RAN00675**  
Flow Black  
Wall  
248x498mm  
I00012  
CM



**RAN00712**  
Flow Dusk  
Wall  
248x498mm  
I00012  
CM



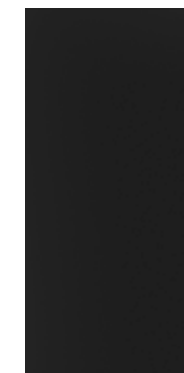
**RAN00705**  
Flow Putty  
Wall  
248x498mm  
I00012  
CM



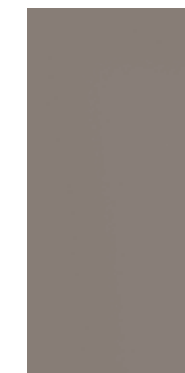
**RAN00880**  
Plain White  
Wall  
248x498mm  
I00012  
CM



**RAN00897**  
Plain Smoke  
Wall  
248x498mm  
I00012  
CM



**RAN00873**  
Plain Black  
Wall  
248x498mm  
I00012  
CM



**RAN00910**  
Plain Dusk  
Wall  
248x498mm  
I00012  
CM



**RAN00903**  
Plain Putty  
Wall  
248x498mm  
I00012  
CM

# TILES BY STUDIO CONRAN

— BROUGHT TO YOU BY —  
british ceramic tile

## LINEA POINT.

Inspired by traces of water; Point's droplets of deep gloss glaze punctuate a rich satin surface with a loose, yet linear pattern. The result is a surprising, yet subtle finish that responds to the way light falls upon it.

**RAN00736**

Point Décor White  
Wall  
248x498mm  
I0012D

**RAN00743**

Point Décor Smoke  
Wall  
248x498mm  
I0012D

**RAN00729**

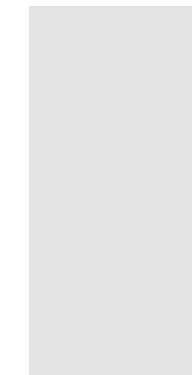
Point Décor Black  
Wall  
248x498mm  
I0012D

**RAN00767**

Point Décor Dusk  
Wall  
248x498mm  
I0012D

**RAN00750**

Point Décor Putty  
Wall  
248x498mm  
I0012D

**RAN00880**

Plain White  
Wall  
248x498mm  
I00012

**RAN00897**

Plain Smoke  
Wall  
248x498mm  
I00012

**RAN00873**

Plain Black  
Wall  
248x498mm  
I00012

**RAN00910**

Plain Dusk  
Wall  
248x498mm  
I00012

**RAN00903**

Plain Putty  
Wall  
248x498mm  
I00012





# TILES BY STUDIO CONRAN

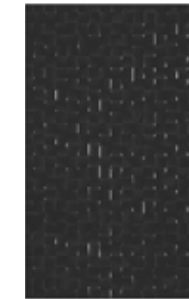
— BROUGHT TO YOU BY —  
british ceramic tile

# TACTILE HARTLAND.

The crystalline structure of naturally occurring mineral deposits provided the inspiration of Hartland's rugged structure, which is made up of small angled squares. The different facets of the tile reflect light around the room adding textural interest to your wall.



**RAN00774**  
White Pressed  
Mosaic Wall  
248x398mm  
H0012D  
C G



**RAN00781**  
Black Pressed  
Mosaic Wall  
248x398mm  
H0012D  
C G



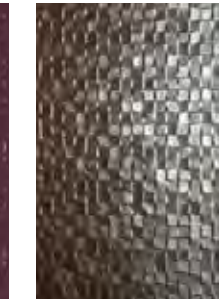
**RAN00798**  
Putty Pressed  
Mosaic Wall  
248x398mm  
H0012D  
C G



**RAN00804**  
Poise Pressed  
Mosaic Wall  
248x398mm  
H0012D  
C G



**RAN00811**  
Plum Pressed  
Mosaic Wall  
248x398mm  
H0012D  
C G



**RAN00453**  
Metallic Pressed  
Mosaic Wall  
248x398mm  
H0013  
C G



**RAN01061**  
Plain White  
Wall  
248x398mm  
H0012  
C G



**RAN01078**  
Plain Black  
Wall  
248x398mm  
H0012  
C G



**RAN01085**  
Plain Putty  
Wall  
248x398mm  
H0012  
C G



**RAN01092**  
Plain Poise  
Wall  
248x398mm  
H0012  
C G



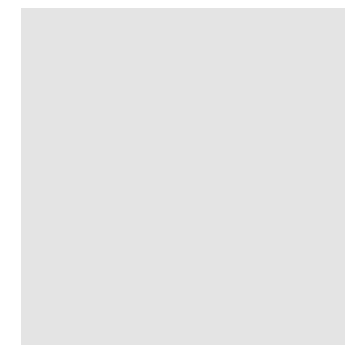
**RAN01108**  
Plain Plum  
Wall  
248x398mm  
H0012  
C G

# TILES BY STUDIO CONRAN

— BROUGHT TO YOU BY —  
british ceramic tile

# TRACE.

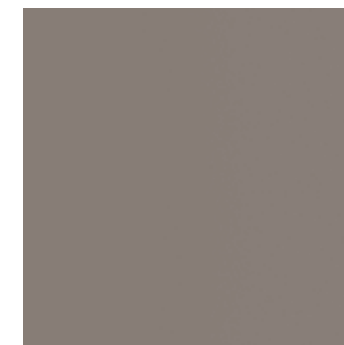
Create a harmonious space with this range of large square floor tiles which complements the Flow, Point and Tactile ranges.



**RAN01009**  
Plain White Floor  
498x498mm  
P0012  
C M PEI 4



**RAN00996**  
Plain Black Floor  
498x498mm  
P0012  
C M PEI 3



**RAN01054**  
Plain Dusk Floor  
498x498mm  
P0012  
C M PEI 2



**RAN01016**  
Plain Poise Floor  
498x498mm  
P0012  
C M PEI 2



**RAN01023**  
Plain Plum Floor  
498x498mm  
P0012  
C M PEI 2



**RAN01047**  
Plain Smoke Floor  
498x498mm  
P0012  
C M PEI 3

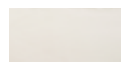


**RAN01030**  
Plain Putty Floor  
498x498mm  
P0012  
C M PEI 3

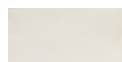
[www.britishceramictile.com](http://www.britishceramictile.com) | Tel. 08450551275 | [enquiries@britishceramictile.com](mailto:enquiries@britishceramictile.com)

P Porcelain NS Natural Stone C Ceramic G Gloss M Matt S Satin PEI 4 Wear Rating





**BCT23371**  
White Wall  
150x75mm  
A0003  
C G



**BCT23401**  
Cream Wall  
150x75mm  
A0003  
C G



**BCT23524**  
Sage Wall  
150x75mm  
A0003  
C G



**BCT23388**  
White Wall  
100x300mm  
D0003  
C G



**BCT23418**  
Cream Wall  
100x300mm  
D0003  
C G



**BCT23531**  
Sage Wall  
100x300mm  
D0003  
C G



**BCT23562**  
Cornflower Wall  
100x300mm  
D0003  
C G

# COOKHOUSE CHARACTER.

Beautiful 10mm thick rustic wall tiles with rich glazes in a choice of muted colours.

Lay in a variety of ways to create a unique edge



**BCT43065**  
White Wall  
100x200mm  
C0003  
C G



**BCT43041**  
Grey Wall  
100x200mm  
C0003  
C G



**BCT43003**  
Duck Egg Wall  
100x200mm  
C0003  
C G



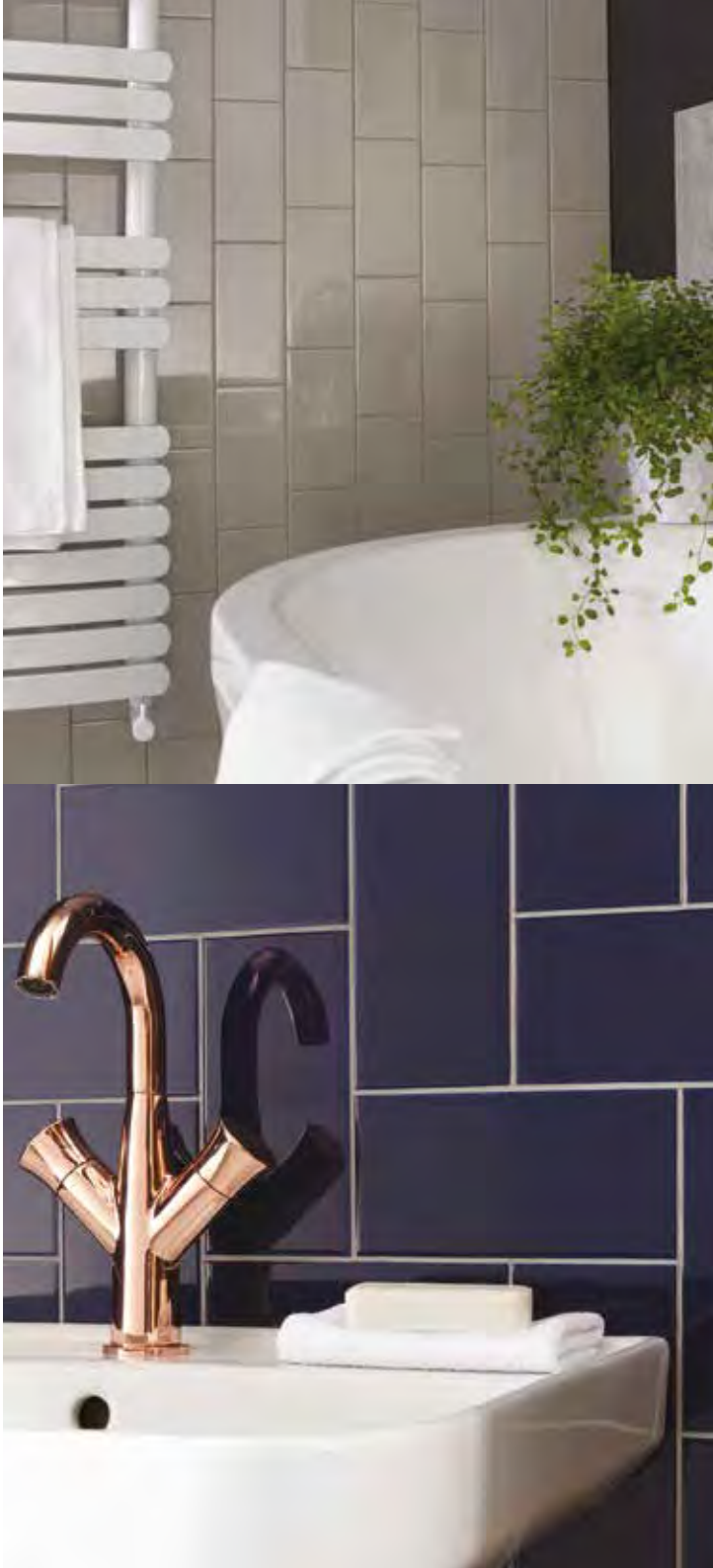
**BCT43034**  
Black Wall  
100x200mm  
C0003  
C G



**BCT52159**  
Navy Wall  
100x200mm  
C0003  
C G



**BCT52166**  
Denim Wall  
100x200mm  
C0003  
C G



# COSMOPOLITAN.

These on-trend and contemporary flat small format tiles are perfect for colours. Cosmopolitan can be mix-and-matched and laid in a variety of ways to give a unique edge on any wall.



# DARTMOOR NATURALS.

Natural effect satin finish ceramic wall and floor tiles, with complementary border strips.



**CAN43596**  
Limestone Wall  
248x398mm  
H0002  
C S



**CAN43602**  
Sandstone Wall  
248x398mm  
H0002  
C S



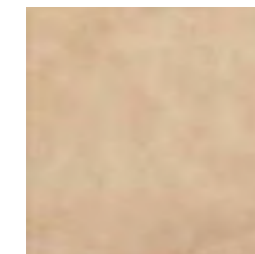
**CAN43572**  
Quartz Wall  
248x398mm  
H0002  
C S



**CAN43619**  
Pulpis Wall  
248x398mm  
H0004  
C S



**BCT44635**  
Limestone Floor  
331x331mm  
K0002  
P S PEI 4



**BCT13853**  
Sandstone Floor  
331x331mm  
K0002  
P S PEI 4



**BCT13808**  
White Floor  
331x331mm  
K0002  
P S PEI 4



**CAN43640**  
Beige Glass Dots Strip  
312x60mm  
X0005  
G



**CAN43626**  
Black/White Marble Strip  
305x48mm  
X0005  
NS M



**CAN43633**  
Beige Marble Strip  
305x48mm  
X0005  
NS M



**BCT22572**  
White  
Wall and Floor  
298x598mm  
N0002  
C M PEI 3



**BCT22527**  
Light Beige  
Wall and Floor  
298x598mm  
N0002  
C M PEI 2



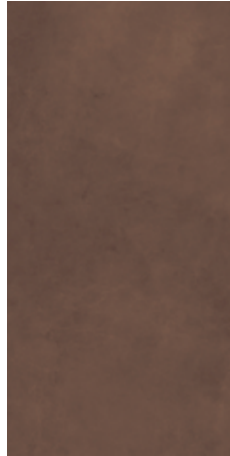
**BCT22534**  
Dark Beige  
Wall and Floor  
298x598mm  
N0002  
C M PEI 2



**BCT22541**  
Light Grey  
Wall and Floor  
298x598mm  
N0002  
C M PEI 3



**BCT22558**  
Dark Grey  
Wall and Floor  
298x598mm  
N0002  
C M PEI 2



**BCT08507**  
Brown  
Wall and Floor  
298x598mm  
N0002  
C M PEI 2



**BCT08491**  
Black  
Wall and Floor  
298x598mm  
N0002  
C M PEI 2



**BCT38375**  
Black Hammered  
Glass Mosaic  
305x305mm  
W0004A  
G



DEVONSTONE.

Simplicity and clarity inspired by our Devon heritage.





# DEVONSTONE.

Simplicity and clarity inspired by our Devon heritage.



**BCT08453**  
Dark Beige Floor  
331x331mm  
K0002  
C M PEI 3



**BCT08460**  
Dark Grey Floor  
331x331mm  
K0002  
C M PEI 2



**BCT08514**  
Brown Floor  
331x331mm  
K0002  
C M PEI 2



**BCT08521**  
Black Floor  
331x331mm  
K0002  
C M PEI 3



**BCT46806**  
Feature Floor Black  
331x331mm  
K0008  
C M PEI 4



**BCT11064**  
Feature Floor Grey  
331x331mm  
K0008  
C M PEI 4



**BCT11057**  
Feature Floor Brown  
331x331mm  
K0008  
C M PEI 4



NEW



**BCT56805**  
Wall and Floor  
148x498mm  
F0008  
C M PEI 3



TECHNOLOGY

british ceramic tile

# DISTRESSED WOOD.

Sometimes perfection is in the imperfection. That's what HD Distressed Wood is all about. Worned wood effect, washed of its colours, but still showing cool hues of blues and greys.





TECHNOLOGY

british ceramic tile

# DITTO.

A range of ceramic and porcelain, matt sandstone effect, wall and floor tiles created using the latest in high definition technology.



**BCT20424**  
Beige Wall  
248x498mm  
I0009  
C M



**BCT20455**  
Light Grey Wall  
248x498mm  
I0009  
C M



**BCT20486**  
Dark Grey Wall  
248x498mm  
I0009  
C M



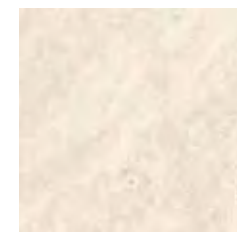
**BCT20431**  
Wave Décor  
Beige Wall  
248x498mm  
I0009D  
C M



**BCT20462**  
Wave Décor  
Light Grey Wall  
248x498mm  
I0009D  
C M



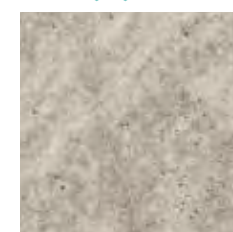
**BCT20493**  
Wave Décor  
Dark Grey Wall  
248x498mm  
I0009D  
C M



**BCT20448**  
Beige Floor  
331x331mm  
K0009  
C M PEI 3



**BCT20479**  
Light Grey Floor  
331x331mm  
K0009  
C M PEI 4



**BCT20509**  
Dark Grey Floor  
331x331mm  
K0009  
C M PEI 4



**BCT12740**  
Beige Floor  
400x600mm  
O0007B  
P M PEI 4



**BCT12757**  
Light Grey Floor  
400x600mm  
O0007B  
P M PEI 4



**BCT12764**  
Dark Grey Floor  
400x600mm  
O0007B  
P M PEI 3

Complementary  
porcelain  
floors



# DORCHESTER.

Large format ceramic wall tiles with co-ordinating floors.



**BCT15420**  
Carrara White Wall  
298x598mm  
N0003  
C G



**BCT15444**  
Calacatta Wall  
298x598mm  
N0003  
C G



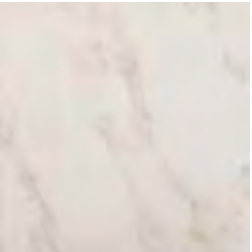
**BCT15451**  
Sandstone Wall and Floor  
298x598mm  
N0003  
C S PEI 3



**BCT15437**  
Travertine Wall  
298x598mm  
N0003  
C G



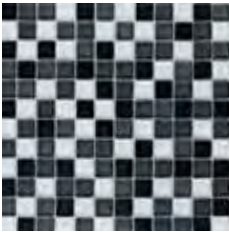
**BCT17370**  
Carrara White Floor  
331x331mm  
K0002  
C G PEI 3



**BCT17394**  
Calacatta Floor  
331x331mm  
K0002  
C G PEI 4



**BCT17356**  
Travertine Floor  
331x331mm  
K0002  
C G PEI 4



**BCT38337**  
Grey Glass Mix Mosaic  
300x300mm  
W0004  
G



**BCT10340**  
Buxton Marble Beige  
Mosaic  
302x302mm  
W0008A  
NS M





**ISC2664**  
Cream Marble  
Polished  
Wall and Floor  
305x305mm  
J0019  
NS G



**ISC2665**  
Cream Marble  
Mosaic Polished  
Wall and Floor  
305x305mm  
W0019  
NS G



**ISC2666**  
Cream Brick  
Mosaic Polished  
Wall  
305x305mm  
N0002  
NS G



**ISC2670**  
Cream Marble Polished  
Wall and Floor  
406x610mm  
Q0019  
NS G

**ISC2669**  
Cream Marble  
Polished Wall  
203x610mm  
N0021  
NS G



**ISC2691**  
Java Grey  
Polished Wall  
305x305mm  
J0020  
NS G



**ISC2696**  
Java Grey Mosaic  
Polished Wall and Floor  
305x305  
W0019  
NS G



**ISC2693**  
Java Grey  
Polished Wall and Floor  
305x610mm  
N0020  
NS G



**ISC2679**  
Rice White  
Scored Wall  
305x305mm  
W0021  
NS M



**ISC2676**  
Rice White Mosaic  
Honed Wall and Floor  
305x305mm  
W0019  
NS M



**ISC2677**  
Rice White Brick Mosaic  
Honed Wall  
305x305mm  
W0019  
NS M



**ISC2680**  
Rice White  
Honed Wall and Floor  
305x305mm  
J0020  
NS M



# ELITE STONE.

Elite is a superior collection of distinct natural marble ranges that release the true beauty of Indonesian stone. Contemporary yet rustic, urban yet traditional, the Elite Stone collection offers unsurpassable beauty and a quality of marble that is second to none.





# ELGIN MARBLES.

Marble and natural effect ceramic wall tiles with gloss finish and matching porcelain floor tiles.



**BCT13907**  
Black Wall  
248x398mm  
H0004  
C G



**BCT12672**  
Cappuccino  
Beige Wall  
248x398mm  
H0004  
C G



**BCT12696**  
Cappuccino  
Beige Mosaic  
248x398mm  
H0004  
C G



**BCT12665**  
Cappuccino  
Cream Wall  
248x398mm  
H0004  
C G



**BCT03663**  
Travertine Wall  
248x398mm  
H0002  
C G



**BCT03649**  
Crema Marfil Wall  
248x398mm  
H0002  
C G



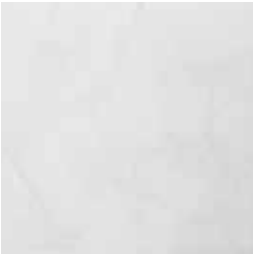
**BCT03625**  
White Wall  
248x398mm  
H0002  
C G



**BCT03762**  
Crema Marfil/  
Marron Strip  
248x80mm  
X0002  
C G



**BCT03755**  
White/ Black Strip  
248x80mm  
X0002  
C G



**BCT13808**  
White Floor  
333x333mm  
K0002  
P G PEI 4





**BCT48787**  
White  
Wall and Floor  
298x598mm  
N0009  
C M PEI 4



**BCT48770**  
Black  
Wall and Floor  
298x598mm  
N0009  
C M PEI 2



# EOS LUSTRE.

A range of large format tiles with a beautiful premium lustre effect which would create a feature in any room.



# EXTREME PORCELAIN.

Beautiful, contemporary porcelain with the quality and durability you would expect but at the price you wouldn't.



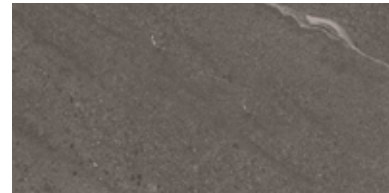
**BCT47308**  
Dark Grey Floor  
600x600mm  
Q0006  
P M PEI 3



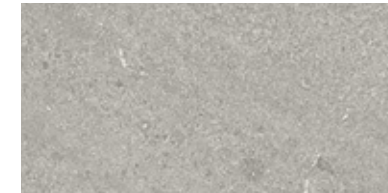
**BCT47292**  
Mid Grey Floor  
600x600mm  
Q0006  
P M PEI 3



**BCT47285**  
Light Grey Floor  
600x600mm  
Q0006  
P M PEI 4



**BCT47254**  
Dark Grey Wall and Floor  
300x600mm  
N0006  
P M PEI 3



**BCT47261**  
Mid Grey Wall and Floor  
300x600mm  
N0006  
P M PEI 3



**BCT47278**  
Light Grey Wall and Floor  
300x600mm  
N0006  
P M PEI 4



**BCT53903**  
Dark & Mid Grey Mosaic  
290x300mm  
W0007D  
P M PEI 3

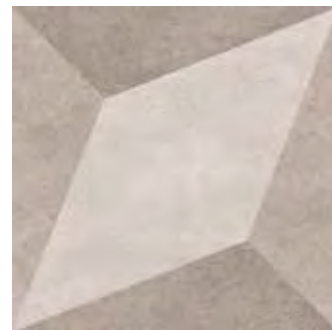


**BCT53910**  
Light Grey Mosaic  
290x300mm  
W0007D  
P M PEI 4

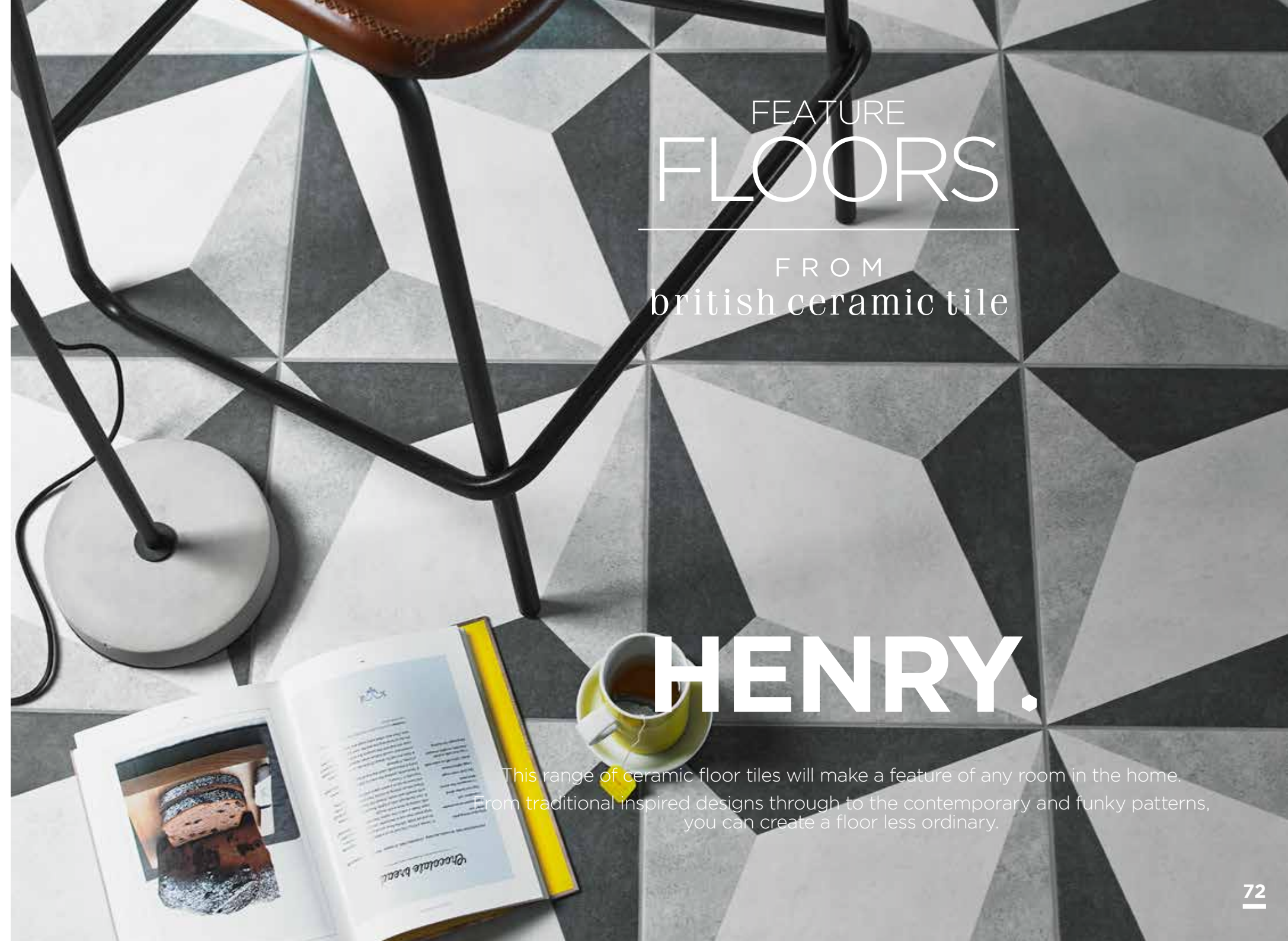




**BCT49333**  
Feature Floor  
Grey  
331x331mm  
K0010  
C M PEI 4



**BCT49340**  
Feature Floor  
Beige  
331x331mm  
K0010  
C M PEI 4



# FEATURE FLOORS

FROM  
british ceramic tile

# HENRY.

This range of ceramic floor tiles will make a feature of any room in the home. From traditional inspired designs through to the contemporary and funky patterns, you can create a floor less ordinary.





**BCT49302**  
Feature Floor  
Grey  
498x498mm  
P0010  
C M PEI 4



**BCT49319**  
Feature Floor  
Beige  
498x498mm  
P0010  
C M PEI 4



FEATURE  
FLOORS

FROM  
british ceramic tile

ALFRED.

This range of ceramic floor tiles will make a feature of any room in the home.  
From traditional inspired designs through to the contemporary and funky patterns,  
you can create a floor less ordinary.



# FEATURE FLOORS

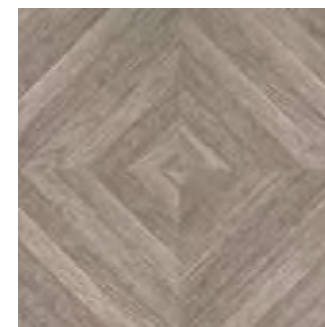
FROM  
british ceramic tile



TECHNOLOGY



TECHNOLOGY  
british ceramic tile



## **BCT28703**

Parquet Feature Floor  
498x498mm  
P0010

C M PEI 3



## **BCT49326**

HD Distinction Grey  
Wall and Floor  
498x498mm  
K0010

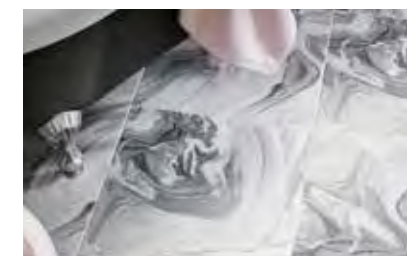
C M PEI 4



## **BCT14423**

HD Concrete  
Feature Floor  
331x331mm  
K0010

C M PEI 4





# FEATURE FLOORS

FROM  
british ceramic tile

# DEVONSTONE.

Simplicity and clarity inspired by our Devon heritage.



**BCT46806**

Feature Floor Black  
331x331mm  
K0008



**BCT11064**

Feature Floor Grey  
331x331mm  
K0008



**BCT11057**

Feature Floor Brown  
331x331mm  
K0008







**BCT28642**  
Bertie Floor  
Off White/Black  
331x331mm  
K0010  
C M PEI 4



**BCT28659**  
Mary Floor  
331x331mm  
K0010  
C M PEI 3



**BCT28710**  
Illusion Grey Floor  
331x331mm  
K0010  
C M PEI 3



**BCT53606**  
Retro Floor  
331x331mm  
K0010  
C M PEI 4

# FEATURE FLOORS

FROM  
british ceramic tile



This range of ceramic floor tiles will make a feature of any room in the home.

From traditional inspired designs through to the contemporary and funky patterns, you can create a floor less ordinary.



# FUNCTION AND FORM

FROM  
british ceramic tile

# FORM WAVE.

Function and Form comprises a contemporary range of black and white ceramic wall and floor tiles with complementary 3D wave effect décors to create a striking monochrome look.



3D

**BCT19946**

White Gloss Wall  
248x498mm  
I0002D

C G



3D

**BCT18758**

Black Gloss Wall  
248x498mm  
I0002D

C G



3D

**BCT18741**

White Matt Wall  
248x498mm  
I0002D

C M

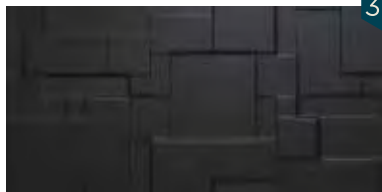




3D

**BCT42037**

White Satin Wall  
248x498mm  
10002D



3D

**BCT42020**

Black Satin Wall  
248x498mm  
10002D



3D

**BCT42013**

White Gloss Wall  
248x498mm  
10002D



3D

**BCT42006**

Black Gloss Wall  
248x498mm  
10002D



# FUNCTION AND FORM

---

FROM  
british ceramic tile

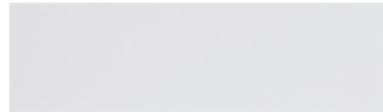
# FORM PATCHWORK.

The new Function & Form Patchwork is a structured décor and is available in black and white in both gloss and satin formats. It can be used as a feature wall against the co-ordinating plain Function tiles.



# FUNCTION & FORM.

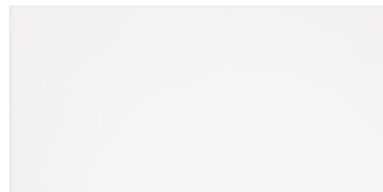
A contemporary range of black and white wall and floor tiles  
with various 3D effect décors



**BCT20936**  
White Gloss Plank Wall  
148x498mm  
F0002  
C G



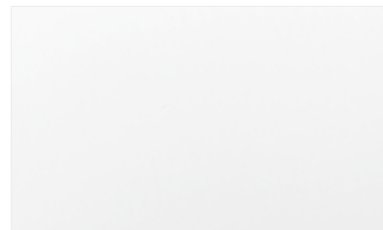
**BCT20943**  
Black Gloss Plank Wall  
148x498mm  
F0002  
C G



**BCT19922**  
White Gloss Wall  
248x498mm  
I0002  
C G



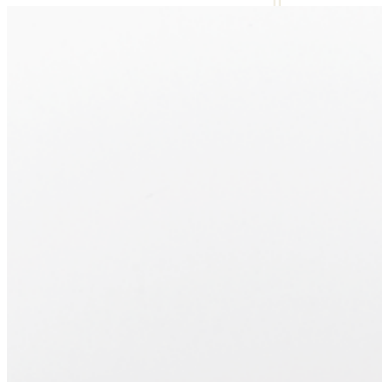
**BCT18703**  
Black Gloss Wall  
248x498mm  
I0002  
C G



**BCT21063**  
White Gloss Wall  
298x498mm  
M0002  
C G



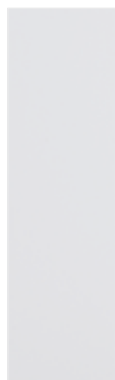
**BCT21087**  
Black Gloss Wall  
298x498mm  
M0002  
C G



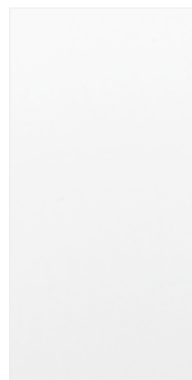
**BCT46684**  
Floor  
498x498mm  
P0002  
C M PEI 4

All sizes also  
available in matt  
finish

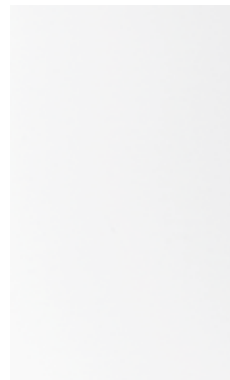




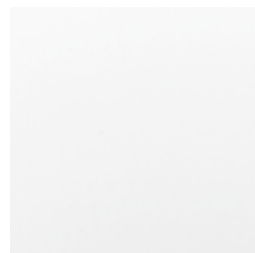
**BCT20912**  
White Matt Plank  
Wall and Floor  
148x498mm  
F0002  
C M PEI 4



**BCT19939**  
White Matt  
Wall  
248x498mm  
I0002  
C M



**BCT21070**  
White Matt  
Wall and Floor  
298x498mm  
F0002  
C M PEI 4



**BCT18833**  
White Matt  
Floor  
331 x331mm  
K0002  
C M PEI 3



**BCT20929**  
Black Matt Plank  
Wall and Floor  
148x498mm  
F0002  
C M PEI 1



**BCT18710**  
Black Matt  
Wall  
248x498mm  
I0002  
C M



**BCT21094**  
Black Matt  
Wall and Floor  
298x498mm  
M0002  
C M PEI 1



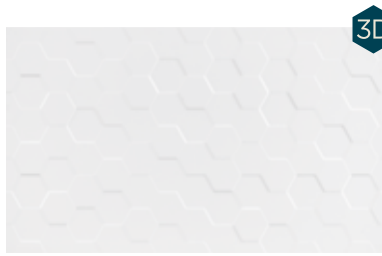
**BCT18857**  
Black Matt  
Floor  
331 x331mm  
K0002  
C M PEI 2

# FUNCTION AND FORM

FROM  
british ceramic tile

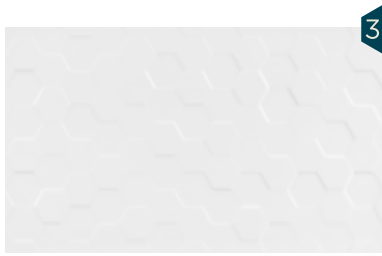
# FUNCTION & FORM.

A contemporary range of black and white wall and floor tiles  
with various 3D effect décors



3D

**BCT42129**  
White Gloss Wall  
298x498mm  
M0002D  
C G



3D

**BCT42136**  
White Matt Wall  
298x498mm  
M0002D  
C M



3D

**BCT42143**  
Black Gloss Wall  
298x498mm  
M0002D  
C G



3D

**BCT42150**  
Black Matt Wall  
298x498mm  
M0002D  
C M

FUNCTION AND  
**FORM**  
FROM  
british ceramic tile

# FORM HEX.

A structured decorative tile featuring an on trend hexagon shape for use with the plain function tiles. Hex is available in black and white in both matt and gloss finishes.







TECHNOLOGY

british ceramic tile

# GALVANISED.

A combination of original imagery and the latest in high definition inkjet technology was used to create HD Galvanised. An authentic, and on trend, weathered metal effect range inspired by rustic industrial spaces.



## BCT54191

Platinum White  
Wall and Floor  
298x498mm  
M0009

C M PEI 4



## BCT54207

Steel Grey  
Wall and Floor  
298x498  
M0009

C M PEI 4

Natural-looking  
with a unique  
metal-effect  
finish



TECHNOLOGY

british ceramic tile

# GECKO.

Distinctive sandstone effect ceramic tile created using the very latest HD technology, each tile has its own individual characteristics just like the natural alternative.



**BCT21537**

Grey  
Wall and Floor  
298x498mm  
M0009



**BCT21544**

Beige  
Wall and Floor  
298x498mm  
M0009





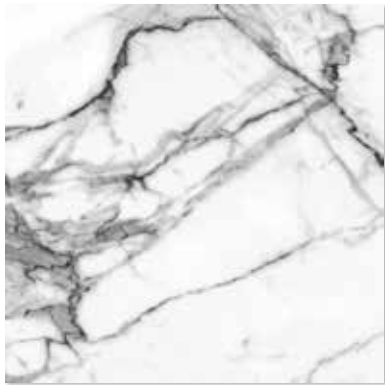


**BCT41849**

Wall

248x498mm

10009



**BCT41856**

Floor

498x498mm

P0009



TECHNOLOGY

british ceramic tile

# GENEVA.

Geneva offers a modern striking black and white carrara marble effect that adds luxury within any bathroom.



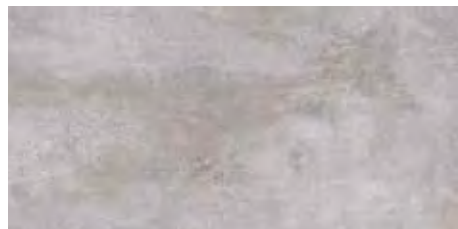
**BCT52616**

White  
Wall and Floor  
298x598mm  
N0009



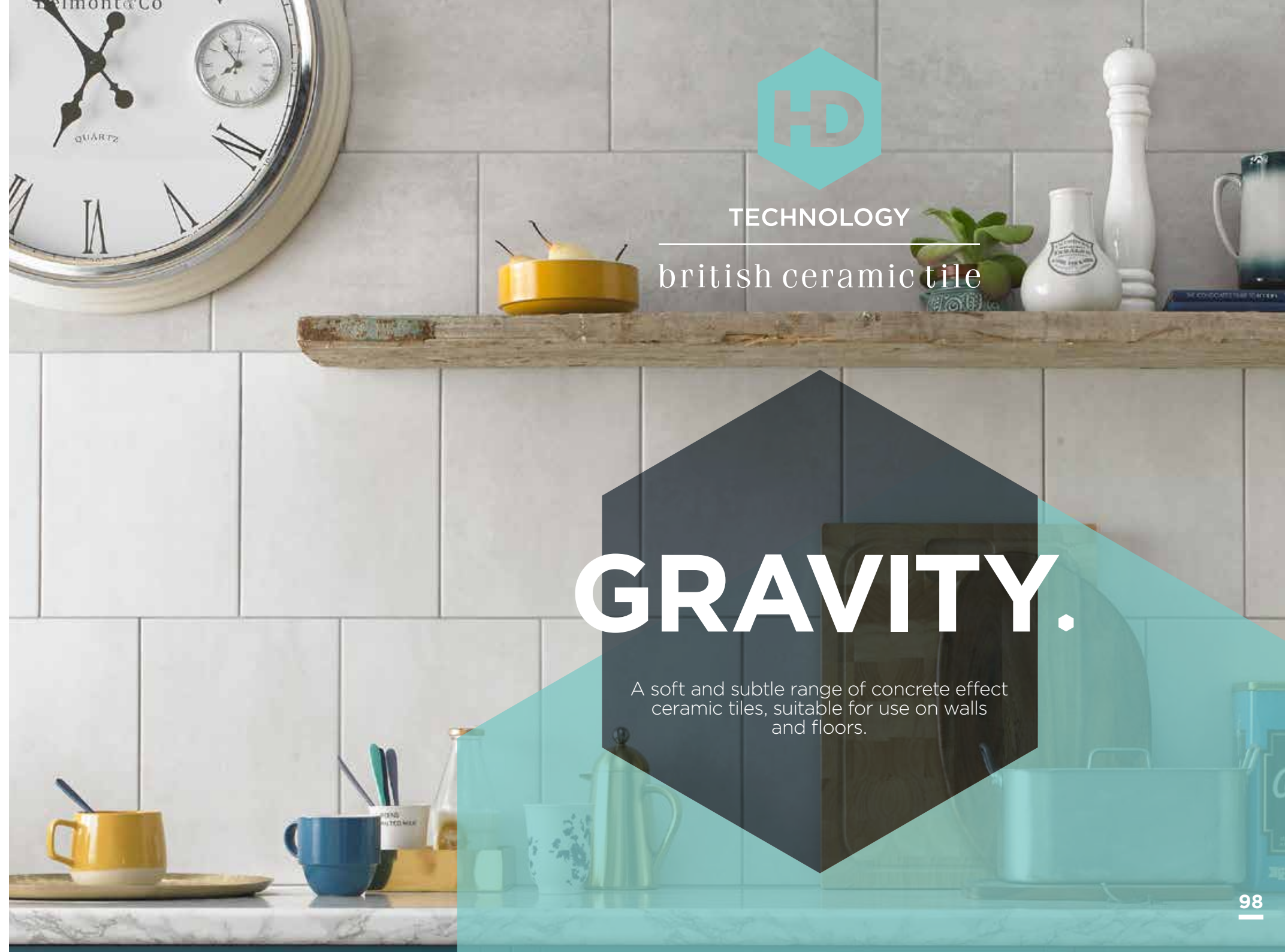
**BCT52623**

Light Grey  
Wall and Floor  
298x598mm  
N0009



**BCT52630**

Mid Grey  
Wall and Floor  
298x598mm  
N0009



TECHNOLOGY

british ceramic tile

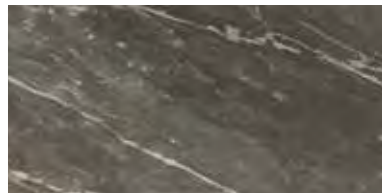
# GRAVITY.

A soft and subtle range of concrete effect ceramic tiles, suitable for use on walls and floors.

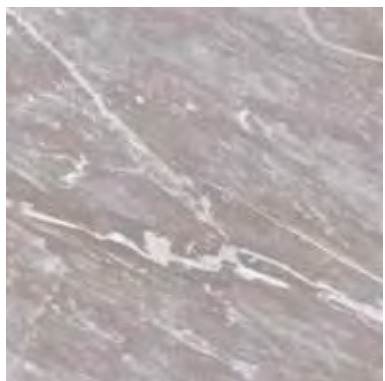




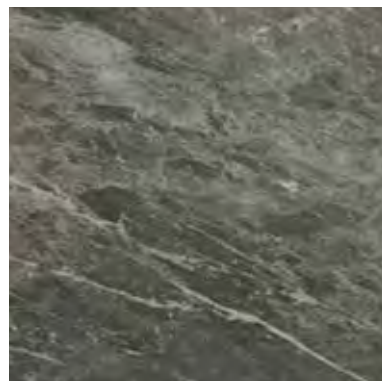
**BCT53613**  
Grey Wall  
248x498mm  
10009  
C M



**BCT53620**  
Dark Grey Wall  
248x498mm  
10009  
C M



**BCT53736**  
Grey Floor  
498x498mm  
P0009  
C M PEI 3



**BCT53743**  
Dark Grey Floor  
498x498mm  
P0009  
C M PEI 3



**BCT56751**  
Harmony Floor  
331x331mm  
K0010  
C M PEI 3



HD Harmony  
feature floor tile  
3 designs



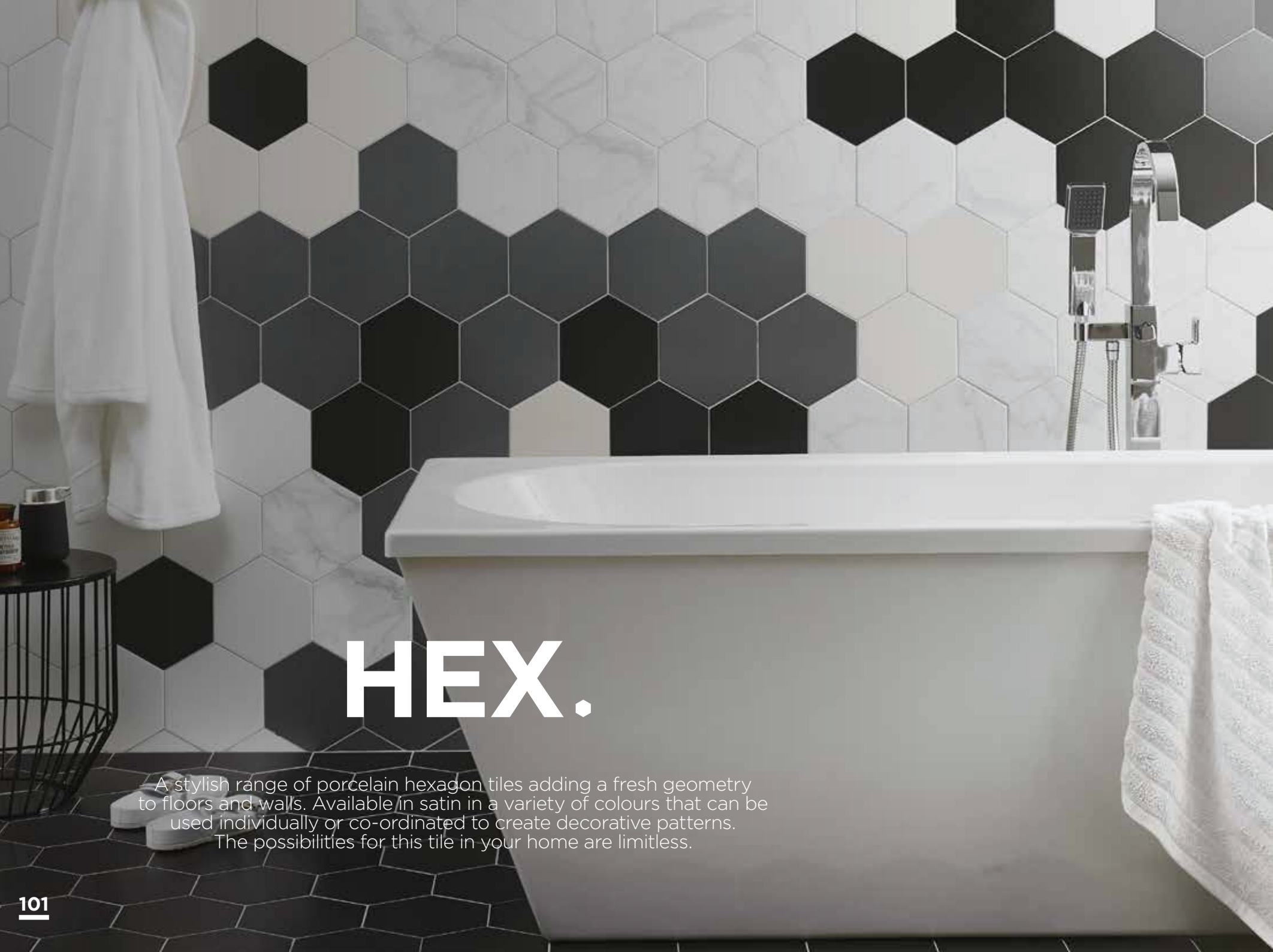
TECHNOLOGY  
british ceramic tile

# HARMONY.

A sumptuous grey marble effect range available in variety of formats, tapping into current marble trends. Harmony is produced using the latest High Definition inkjet technology for the added depth and movement.







# HEX.

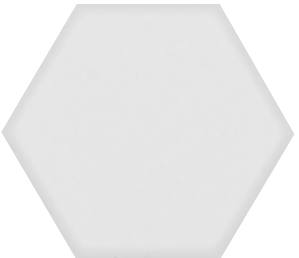
A stylish range of porcelain hexagon tiles adding a fresh geometry to floors and walls. Available in satin in a variety of colours that can be used individually or co-ordinated to create decorative patterns. The possibilities for this tile in your home are limitless.



**BCT48466**  
HD Laurel  
Wall and Floor  
175x202mm  
R0007  
P S PEI 4



**BCT48428**  
Black  
Wall and Floor  
175x202mm  
R0007  
P M PEI 2



**BCT48459**  
White  
Wall and Floor  
175x202mm  
R0007  
P S PEI 5



**BCT48442**  
Cream  
Wall and Floor  
175x202mm  
R0007  
P S PEI 4



**BCT48435**  
Grey  
Wall and Floor  
175x202mm  
R0007  
P S PEI 3





**BCT46530**  
Anthracite Wall and Floor  
300x600mm  
N0006



**BCT46554**  
Grey Wall and Floor  
300x600mm  
N0006



**BCT46578**  
Pearl Wall and Floor  
300x600mm  
N0006



**BCT46523**  
Anthracite Floor  
600x600mm  
Q0006



**BCT46547**  
Grey Floor  
600x600mm  
Q0006



**BCT46561**  
Pearl Floor  
600x600mm  
Q0006

# HORIZON PORCELAIN.

Beautiful, contemporary porcelain with the quality and durability you would expect but at the price you wouldn't.



China Blue



**BCT54634**

Basin  
600x300mm

**BCT49807**

Kitchen  
600x750mm

**BCT54436**

Kitchen  
900x750mm

**BCT54641**

Kitchen  
990x750mm



Emerald



**BCT54726**

Basin  
600x300mm

**BCT36470**

Kitchen  
600x750mm

**BCT36487**

Kitchen  
900x750mm

**BCT54733**

Kitchen  
990x750mm

6mm thick  
toughened  
glass  
splashbacks\*

990x750mm  
special order  
only

Supplied with  
self adhesive  
backing for easy  
installation



French Navy



**BCT54740**

Basin  
600x300mm

**BCT49784**

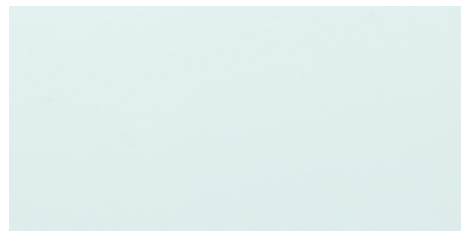
Kitchen  
600x750mm

**BCT54757**

Kitchen  
900x750mm

**BCT54771**

Kitchen  
990x750mm



Whisper



**BCT54955**

Basin  
600x300mm

**BCT33073**

Kitchen  
600x750mm

**BCT33080**

Kitchen  
900x750mm

**BCT54962**

Kitchen  
990x750mm

**BCT33110**

Upstand  
1000x140mm

# IMPACT

## SPLASHBACKS

FROM  
british ceramic tile

NEW



Designed to be on trend and make a statement, The Impact Splashback Collection offers a contemporary addition to any kitchen or bathroom. Individually handmade in the UK, the Impact Splashbacks and Upstands are easy to fix and maintain. Supplied with self adhesive backing, you simply peel, stick and seal to your wall!

Colour swatch references, shown to scale at 300x600mm Size. \* Toughened glass excludes 1000x140mm upstands.

www.britishceramictile.com | Tel. 08450551275 | enquiries@britishceramictile.com

**P** Porcelain **NS** Natural Stone **C** Ceramic **G** Gloss **M** Matt **S** Satin **PEI 4** Wear Rating





Crimson Metallic



**BCT54634**

Basin  
600x300mm

**BCT54627**

Kitchen  
600x750mm

**BCT54689**

Kitchen  
900x750mm

**BCT54702**

Kitchen  
990x750mm



Rose Gold Metallic



**BCT54870**

Basin  
600x300mm

**BCT54887**

Kitchen  
600x750mm

**BCT54894**

Kitchen  
900x750mm

**BCT54917**

Kitchen  
990x750mm



Silver Metallic



**BCT54924**

Basin  
600x300mm

**BCT33950**

Kitchen  
600x750mm

**BCT33967**

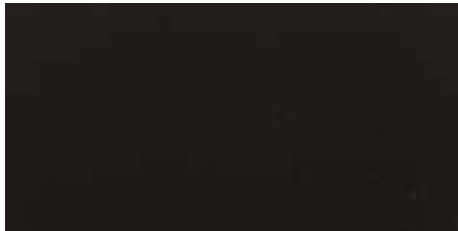
Kitchen  
900x750mm

**BCT54931**

Kitchen  
990x750mm

**BCT33998**

Upstand  
1000x140mm



Galaxy Sparkle



**BCT54788**

Basin  
600x300mm

**BCT33608**

Kitchen  
600x750mm

**BCT33615**

Kitchen  
900x750mm

**BCT54795**

Kitchen  
990x750mm

**BCT33646**

Upstand  
1000x140mm

6mm thick  
toughened  
glass  
splashbacks\*

990x750mm  
special order  
only

Supplied with  
self adhesive  
backing for easy  
installation

# IMPACT

## SPLASHBACKS

NEW

FROM  
british ceramic tile

Distinctive,  
metallic and  
sparkle  
finishes

Colour swatch references, shown to scale at 300x600mm Size. \* Toughened glass excludes 1000x140mm upstands.

[www.britishceramictile.com](http://www.britishceramictile.com) | Tel. 08450551275 | [enquiries@britishceramictile.com](mailto:enquiries@britishceramictile.com)

Porcelain Natural Stone Ceramic Gloss Matt Satin PEI 4 Wear Rating

Designed to be on trend and make a statement, The Impact Splashback Collection offers a contemporary addition to any kitchen or bathroom. Individually handmade in the UK, the Impact Splashbacks and Upstands are easy to fix and maintain. Supplied with self adhesive backing, you simply peel, stick and seal to your wall!





Ashburton



**BCT54924**

Basin  
600x300mm

**BCT54542**

Kitchen  
600x750mm

**BCT54559**

Kitchen  
900x750mm

**BCT54566**

Kitchen  
990x750mm



Harmony



**BCT54825**

Basin  
600x300mm

**BCT54832**

Kitchen  
600x750mm

**BCT54849**

Kitchen  
900x750mm

**BCT54856**

Kitchen  
990x750mm

6mm thick  
toughened  
glass  
splashbacks\*

990x750mm  
special order  
only

Supplied with  
self adhesive  
backing for easy  
installation



Geneva



**BCT54597**

Basin  
600x300mm

**BCT54603**

Kitchen  
600x750mm

**BCT54610**

Kitchen  
900x750mm

**BCT54627**

Kitchen  
990x750mm

Colour swatch references, shown to scale at 300x600mm Size. \* Toughened glass excludes 1000x140mm upstands.

[www.britishceramictile.com](http://www.britishceramictile.com) | Tel. 08450551275 | [enquiries@britishceramictile.com](mailto:enquiries@britishceramictile.com)

Porcelain Natural Stone Ceramic Gloss Matt Satin PEI 4 Wear Rating

# IMPACT

## SPLASHBACKS

FROM  
british ceramic tile

NEW

Designed to be on trend and make a statement, The Impact Splashback Collection offers a contemporary addition to any kitchen or bathroom. Individually handmade in the UK, the Impact Splashbacks and Upstands are easy to fix and maintain. Supplied with self adhesive backing, you simply peel, stick and seal to your wall!





# INDUSTRIAL.

An on trend range of rustic matt and metallic glazed wall tiles giving a nod towards industrial heritage.



**BCT48404**  
Black Matt Wall  
75x300mm  
B0003  
C M



**BCT57062**  
White Matt Wall  
75x300mm  
B0003  
C M



**BCT48398**  
Iron Wall  
75x300mm  
B0004  
C G



**BCT48374**  
Silver Wall  
75x300mm  
B0004  
C G



**BCT48381**  
Gold Wall  
75x300mm  
B0004  
C G







TECHNOLOGY

british ceramic tile

# INSIGNIA.

A sophisticated gloss marble effect wall tile and anti-slip gloss floor tile available in three colourways created using the latest HD technology.



**BCT47124**

Grey Wall  
248x498mm  
I0009



**BCT47148**

White Wall  
248x498mm  
I0009



**BCT47568**

Beige Wall  
248x498mm  
I0009



**BCT47131**

Grey Anti-Slip Gloss Floor  
498x498mm  
P0009



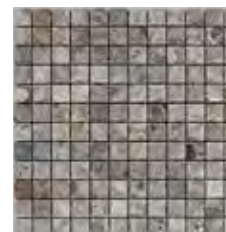
**BCT47162**

White Anti-Slip Gloss Floor  
498x498mm  
P0009



**BCT47575**

Beige Anti-Slip Gloss Floor  
498x498mm  
P0009



**BCT38306**

Lemon Marble  
Mosaic  
300x300mm  
W0002



Add a mosaic  
feature detail



# KEYSTONE.

Porcelain slate effect floor tiles made using the very latest technology.



## ISC3478

Stone Floor  
400x600mm  
00007



## ISC3477

Mocha Floor  
400x600mm  
00007





**LA51508**  
White Wall  
75x150mm  
A0014  
C G



**LA51515**  
Pale Biscuit Wall  
75x150mm  
A0014  
C G



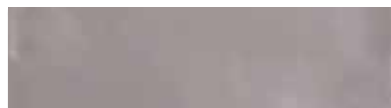
**LA51546**  
French Grey Wall  
75x150mm  
A0014  
C G



**LA51591**  
White Wall  
75x300mm  
B0014  
C G



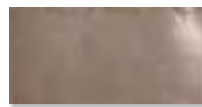
**LA51577**  
Pale Biscuit Wall  
75x300mm  
B0014  
C G



**LA51812**  
French Grey Wall  
75x300mm  
B0014  
C G



**LA51522**  
Eau De Nil Wall  
75x150mm  
A0014  
C G



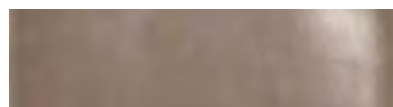
**LA51539**  
Cobblestone Wall  
75x150mm  
A0014  
C G



**LA51560**  
Duck Egg Wall  
75x150mm  
A0014  
C G



**LA51584**  
Eau De Nil Wall  
75x300mm  
B0014  
C G



**LA51829**  
Cobblestone Wall  
75x300mm  
B0014  
C G



**LA51843**  
Duck Egg Wall  
75x300mm  
B0014  
C G

LAURA ASHLEY

— BROUGHT TO YOU BY —  
british ceramic tile

ARTISAN.

With a crafted high gloss finish, Artisan has a traditional handmade feel which is perfect for rustic or vintage-inspired design schemes.

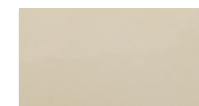



# LAURA ASHLEY

— BROUGHT TO YOU BY —  
british ceramic tile


# ARTISAN.

With a crafted high gloss finish, Artisan has a traditional handmade feel which is perfect for rustic or vintage-inspired design schemes.



**LA51805**  
Creamware Wall  
75x150mm  
A0014  





**LA51553**  
Amethyst Wall  
75x150mm  
A0014  





**LA51799**  
Willow Wall  
75x150mm  
A0014  



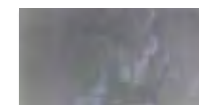

**LA51867**  
Creamware Wall  
75x300mm  
B0014  





**LA51836**  
Amethyst Wall  
75x300mm  
B0014  




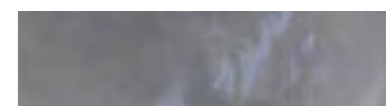
**LA51850**  
Willow Wall  
75x300mm  
B0014  

**LA51942**  
Charcoal Wall  
75x150mm  
A0014  





**LA51966**  
Seaspray Wall  
75x150mm  
A0014  

**LA51959**  
Charcoal Wall  
75x300mm  
B0014  



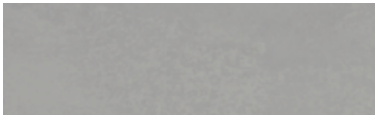

**LA51973**  
Seaspray Wall  
75x300mm  
B0014  




**LA51744**  
Seaspray  
Wall and Floor  
148x498mm  
F00014  
C S PEI 4



**LA51737**  
Beige  
Wall and Floor  
148x498mm  
F00014  
C S PEI 4



**LA51720**  
White  
Wall and Floor  
148x498mm  
F00014  
C S PEI 4



**LA51751**  
Wallace Décor Beige  
Wall and Floor  
148x498mm  
F00014  
C S PEI 4

LAURA ASHLEY

— BROUGHT TO YOU BY —  
british ceramic tile

COASTAL.

Bring the calming sense of the seaside into your home with these coastal-inspired tiles.





**LA51768**

Walnut  
Wall and Floor  
148x498mm

F00014



**LA51874**

Oak  
Wall and Floor  
148x498mm

F00014



**LA51775**

Limed Oak  
Wall and Floor  
148x498mm

F00014



**LA51782**

Whitewash  
Wall and Floor  
148x498mm

F00014



Can be used on  
walls and floors

LAURA ASHLEY

— BROUGHT TO YOU BY —  
british ceramic tile

WOOD  
EFFECT.

Wood effect tiles combine the beauty of wood with the practical benefits of ceramic tiles, as they are hard wearing, water resistant, easy to clean and perfect for use with underfloor heating.



# LAURA ASHLEY

— BROUGHT TO YOU BY —  
british ceramic tile

# JOSETTE.

The classic damask pattern of Josette expands across a two tile panel, perfect for creating an elegant feature wall.



## LA51607

Dove Grey Décor-Part A  
Wall  
298x498mm  
M0014D



## LA51669

Duck Egg Décor-Part A  
Wall  
298x498mm  
M0014D



## LA51614

Dove Grey Décor-Part B  
Wall  
298x498mm  
M0014D



## LA51676

Duck Egg Décor-Part B  
Wall  
298x498mm  
M0014D



## LA51621

Dove Grey  
Wall and Floor  
298x498mm  
M0014



## LA51683

Duck Egg  
Wall and Floor  
298x498mm  
M0014







**LA51638**  
Pale Linen Décor-Part A  
Wall  
298x498mm  
M0014D  
**C M**



**LA51690**  
White Décor-Part A  
Wall  
298x498mm  
M0014D  
**C M**



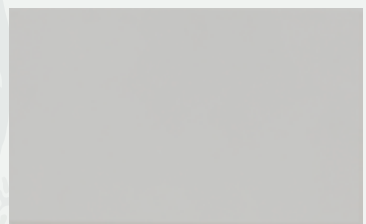
**LA51645**  
Pale Linen Décor-Part B  
Wall  
298x498mm  
M0014D  
**C M**



**LA51706**  
White Décor-Part B  
Wall  
298x498mm  
M0014D  
**C M**



**LA51652**  
Pale Linen  
Wall and Floor  
298x498mm  
M0014  
**C M PEI 3**



**LA51713**  
White  
Wall and Floor  
298x498mm  
M0014  
**C M PEI 3**

# LAURA ASHLEY

— BROUGHT TO YOU BY —  
british ceramic tile

# JOSETTE.

The classic damask pattern of Josette expands across a two tile panel, perfect for creating an elegant feature wall.



LAURA ASHLEY

— BROUGHT TO YOU BY —  
british ceramic tile

# THE WHITE COLLECTION

The White Collection brings a calm and restful feel to your home with its soft floral prints, linear textures and simple geometric patterns. Complement the decorative wall tiles with plain white gloss or satin wall tiles and a choice of floor tiles.



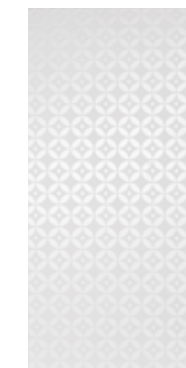
**LA51461**  
Cottonwood  
Linear White Wall  
248x498mm  
IO014  
C S



**LA51454**  
Cottonwood  
Feature White Wall  
248x498mm  
IO014  
C S



**LA51911**  
Marise  
Wall  
248x498mm  
IO014  
C S



**LA51904**  
Finsbury  
Wall  
248x498mm  
IO014  
C S



**LA51898**  
Isodore  
Wall  
248x498mm  
IO014  
C S



**LA51881**  
Highgate  
Wall  
248x498mm  
IO014  
C G



**LA51935**  
White Gloss  
Wall  
248x498mm  
IO015  
C G



**LA51478**  
White Satin  
Wall  
248x498mm  
IO015  
C S



**LA50600**  
Deco White/Silver Strip  
248x40mm  
X0014  
C G

[www.britishceramictile.com](http://www.britishceramictile.com) | Tel. 08450551275 | [enquiries@britishceramictile.com](mailto:enquiries@britishceramictile.com)

P Porcelain NS Natural Stone C Ceramic G Gloss M Matt S Satin PEI 4 Wear Rating

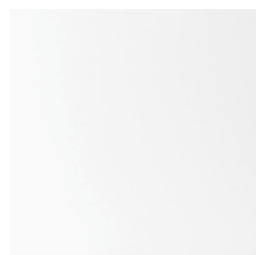




**LA51485**  
Cottonwood Linear  
White Floor  
331x331mm  
K0014  
C S PEI 3



**LA51928**  
Marise Floor  
331x331mm  
K0014  
C S PEI 4



**LA52024**  
White Satin Floor  
331x331mm  
K0015  
C S PEI 4

LAURA ASHLEY

— BROUGHT TO YOU BY —  
british ceramic tile

# THE WHITE COLLECTION.

The White Collection brings a calm and restful feel to your home with its soft floral prints, linear textures and simple geometric patterns. Complement the decorative wall tiles with plain white gloss or satin wall tiles and a choice of floor tiles.





**LA52000**  
Mr Jones  
Charcoal Floor  
331x331mm  
K0014  
  PEI 4



**LA52017**  
Mr Jones  
Dove Grey Floor  
331x331mm  
K0014  
  PEI 4



**LA51980**  
Wicker  
Charcoal Floor  
331x331mm  
K0014  
  PEI 4



**LA51997**  
Wicker  
Dove Grey Floor  
331x331mm  
K0014  
  PEI 4

LAURA ASHLEY  
— BROUGHT TO YOU BY —  
british ceramic tile

# THE HERITAGE COLLECTION.

Inspired by the Laura Ashley Archive; the Heritage Collection will bring timeless style to your home.



LAURA ASHLEY

— BROUGHT TO YOU BY —  
british ceramic tile

# THE SPLASHBACK COLLECTION.

The subtle tones of the core palette range combine simplicity and elegance. Functional and low maintenance, the collection is a beautiful addition to complement an existing design scheme.

Core colours  
available in a  
made to order  
990x750mm  
size



**LA52093**  
Core Palette  
Eau De Nil  
600x750mm  
T0014  
G

**LA52239**  
900x750mm  
S0014



**LA52109**  
Core Palette  
Midnight  
600x750mm  
T0014  
G

**LA52260**  
900x750mm  
S0014



**LA52079**  
Core Palette  
Mineral Grey  
600x750mm  
T0014  
G

**LA2253**  
900x750mm  
S0014



**LA52086**  
Core Palette  
Pale Biscuit  
600x750mm  
T0014  
G

**LA52246**  
900x750mm  
S0014

Colour swatch references and design shown to scale, undersized 600x750mm.

[www.britishceramictile.com](http://www.britishceramictile.com) | Tel. 08450551275 | [enquiries@britishceramictile.com](mailto:enquiries@britishceramictile.com)

P Porcelain NS Natural Stone C Ceramic G Gloss M Matt S Satin

LAURA ASHLEY

— BROUGHT TO YOU BY —  
british ceramic tile

# THE SPLASHBACK COLLECTION.

The perfect on-trend addition to a kitchen or bathroom, which will stand the test of time. With a high gloss finish, the designs within the metallic range add an extra dimension to any wall.

Core colours  
available in a  
made to order  
990x750mm  
size



**LA52048**  
Metallics  
Charcoal  
600x750mm  
T0014



**LA52208**  
900x750mm  
S0014



**LA52062**  
Metallics  
Copper  
600x750mm  
T0014



**LA52222**  
900x750mm  
S0014



**LA52055**  
Metallics  
Pearl White  
600x750mm  
T0014



**LA52215**  
900x750mm  
S0014



**LA52031**  
Metallics  
Pumice  
600x750mm  
T0014



**LA52192**  
900x750mm  
S0014

Colour swatch references and design shown to scale, undersized 600x750mm.

[www.britishceramictile.com](http://www.britishceramictile.com) | Tel. 08450551275 | [enquiries@britishceramictile.com](mailto:enquiries@britishceramictile.com)

Porcelain Natural Stone Ceramic Gloss Matt Satin



LAURA ASHLEY

— BROUGHT TO YOU BY —  
british ceramic tile

# THE SPLASHBACK COLLECTION.

This collection of timeless patterns takes inspiration from the Laura Ashley Archive and Home Collection, ideal for creating an elegant look that commands attention.



**LA52178**

Statement Prints  
Lisette Flint  
600x750mm  
T0014



**LA52338**

900x750mm  
S0014



**LA52185**

Statement Prints  
Lisette White  
600x750mm  
T0014



**LA52345**

900x750mm  
S0014



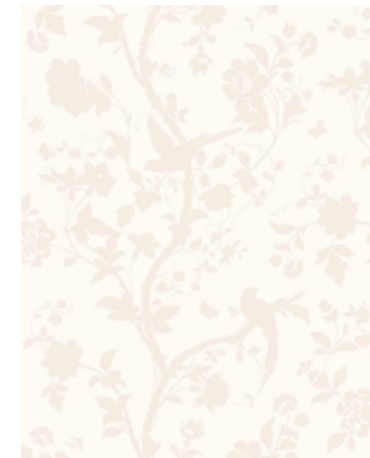
**LA52130**

Statement Prints  
Oriental Garden Charcoal  
600x750mm  
T0014



**LA52291**

900x750mm  
S0014



**LA52147**

Statement Prints  
Oriental Pale Garden Biscuit  
600x750mm  
T0014



**LA52307**

900x750mm  
S0014

Colour swatch references and design shown to scale, undersized 600x750mm.

[www.britishceramictile.com](http://www.britishceramictile.com) | Tel. 08450551275 | [enquiries@britishceramictile.com](mailto:enquiries@britishceramictile.com)

 Porcelain  Natural Stone  Ceramic  Gloss  Matt  Satin

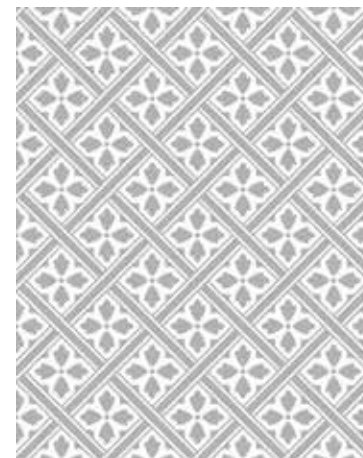


LAURA ASHLEY

— BROUGHT TO YOU BY —  
british ceramic tile

# THE SPLASHBACK COLLECTION.

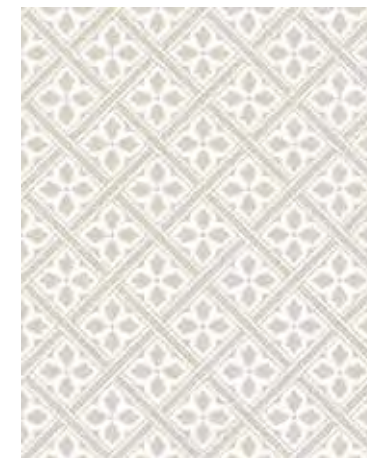
This collection of timeless patterns takes inspiration from the Laura Ashley Archive and Home Collection, ideal for creating an elegant look that commands attention.



**LA52154**  
Statement Prints  
Mr Jones Charcoal  
600x750mm  
T0014



**LA52314**  
900x750mm  
S0014



**LA52161**  
Statement Prints  
Mr Jones Dove Grey  
600x750mm  
T0014



**LA52321**  
900x750mm  
S0014



**LA52116**  
Statement Prints  
Wicker Charcoal  
600x750mm  
T0014



**LA52277**  
900x750mm  
S0014



**LA52123**  
Statement Prints  
Wicker Dove Grey  
600x750mm  
T0014



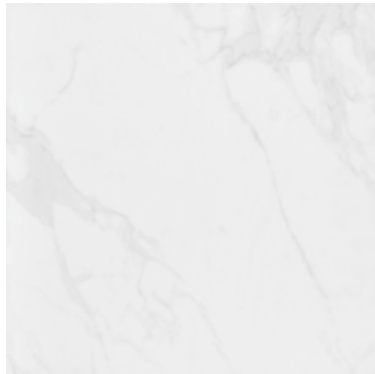
**LA52284**  
900x750mm  
S0014

Colour swatch references and design shown to scale, undersized 600x750mm.

[www.britishceramictile.com](http://www.britishceramictile.com) | Tel. 08450551275 | [enquiries@britishceramictile.com](mailto:enquiries@britishceramictile.com)

P Porcelain N Natural Stone C Ceramic G Gloss M Matt S Satin





**BCT47018**

Floor  
498x498mm  
P0009



**BCT47001**

Wall  
248x498mm  
I0009



TECHNOLOGY

british ceramic tile

# LAUREL MARBLE.

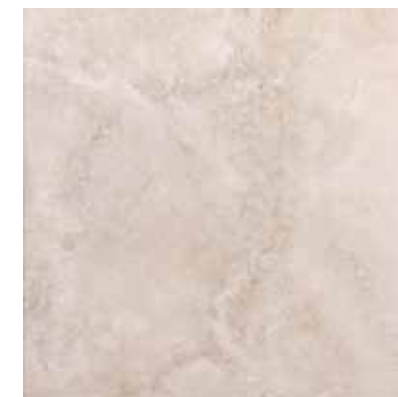
A luxurious white carrara marble effect range available in a variety of formats.

# LEGEND PORCELAIN.

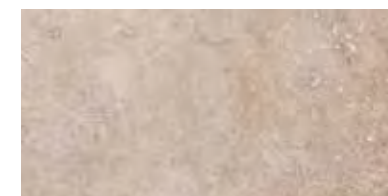
Beautiful, contemporary porcelain with the quality and durability you would expect but at the price you wouldn't.



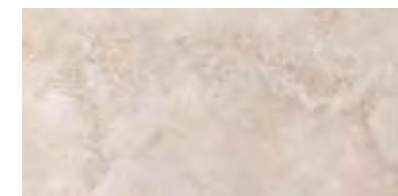
**BCT46608**  
Nuez Floor  
600x600mm  
Q0006  
P M PEI 4



**BCT46585**  
Ivory Floor  
600x600mm  
Q0006  
P M PEI 4



**BCT46615**  
Nuez Wall and Floor  
300x600mm  
N0006  
P M PEI 4



**BCT46592**  
Ivory Wall and Floor  
300x600mm  
N0006  
P M PEI 4



# LUNA.

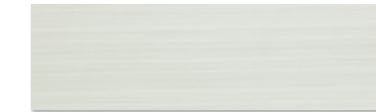
The raised surface structure and a fabric like print is reminiscent of a cosy textile. The mix of shades in each delicate colour is tonally subtle but still interesting enough to add movement and depth creating even more comfort and warmth for a softer feel.



**BCT48992**  
Cloud White Wall  
248x498mm  
I0004  
C M



**BCT49012**  
Glow Beige Wall  
248x498mm  
I0004  
C M



**BCT50643**  
Cloud White Wall and Floor  
148x498mm  
F0004  
C M PEI 4



**BCT50667**  
Glow Beige Wall and Floor  
148x498mm  
F0004  
C M PEI 3



**BCT49005**  
Dust Light Grey Wall  
248x498mm  
I0004  
C M



**BCT50681**  
Night Dark Grey Wall  
248x498mm  
I0004  
C M



**BCT50650**  
Dust Light Grey Wall and Floor  
148x498mm  
F0004  
C M PEI 4

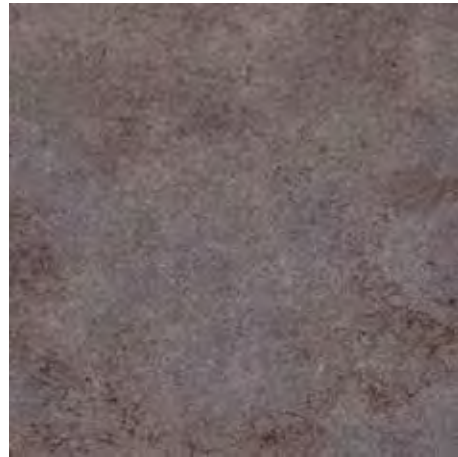


**BCT50674**  
Night Dark Grey Wall and Floor  
148x498mm  
F0004  
C M PEI 3



**BCT30362**

Beige  
Floor  
600x600mm  
Q0008 - R10/B



**BCT30409**

Beige  
Wall and Floor  
298x598mm  
N0007 - R10/B



**BCT30379**

Coffee  
Floor  
600x600mm  
Q0008 - R10/B



**BCT30416**

Coffee  
Wall and Floor  
298x598mm  
N0007 - R10/B



**BCT30386**

Grey  
Floor  
600x600mm  
Q0008 - R10/B



**BCT30423**

Grey  
Wall and Floor  
298x598mm  
N0007 - R10/B



**BCT30393**

Anthracite  
Floor  
600x600mm  
Q0008 - R10/B



**BCT30430**

Anthracite  
Wall and Floor  
298x598mm  
N0007 - R10/B



Anti-slip  
rectified  
porcelain



LOFT.

An anti-slip, rectified porcelain range, with a subtle textured design.



# LUSTRE.

An elegant range of lustre effect ceramic tiles perfect for creating modern feature wall with depth and class.



Reflective  
multi-faceted  
surfaces that  
catch the  
light



**BCT50636**  
Squares Wall  
248x498mm  
10003  
C G



**BCT53767**  
Elongated Brick Wall  
248x498mm  
10003  
C G



**BCT53750**  
Scallops Wall  
248x498mm  
10003  
C G



**BCT56881**  
Moroccan Wall  
248x498mm  
10003  
C G



# METRO.

Ceramic wall tiles in contemporary rectangular formats with a beveled edge.



**BCT50520**  
White Wall  
100x200mm  
C0002  
C G



**BCT50537**  
Cream Wall  
100x200mm  
C0002  
C G



**BCT50551**  
Black Wall  
100x200mm  
C0002  
C G



**BCT50544**  
Grey Wall  
100x200mm  
C0002  
C G



[www.britishceramictile.com](http://www.britishceramictile.com) | Tel. 08450551275 | [enquiries@britishceramictile.com](mailto:enquiries@britishceramictile.com)

P Porcelain NS Natural Stone C Ceramic G Gloss M Matt S Satin PEI 4 Wear Rating





**BCT48367**

Conker  
Wall  
298x498mm  
M0002D



**BCT48619**

Conker  
Wall and Floor  
298x498mm  
M0002D



TECHNOLOGY

british ceramic tile

# MEDAL.

A luxurious marble effect range created using the latest HD Ultra technology. Available in a gloss wall tile and co-ordinating matt Wall and Floor tile.

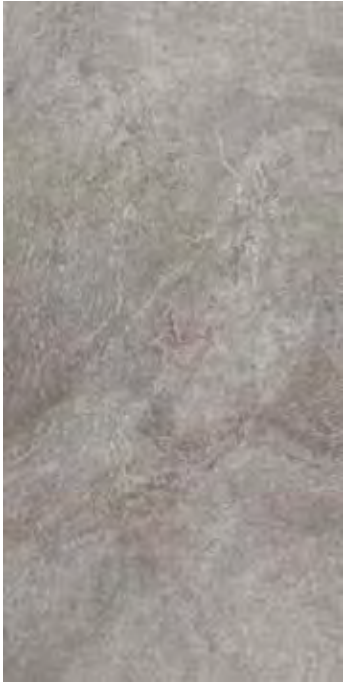




# MIJARES.

Mijares provides a unique experience of unspoilt nature. Made from porcelain, these tiles are durable and perfect for use inside and outside.

Perfect for  
use in  
wet rooms



## BCT44345

Greige  
Wall and Floor  
450x900mm  
00022



## BCT44314

Grey  
Wall and Floor  
450x900mm  
00022







TECHNOLOGY

british ceramic tile

# MIMEO.

Beautiful stone effect ceramic tile printed using the latest in HD technology.

Available in  
matt and gloss



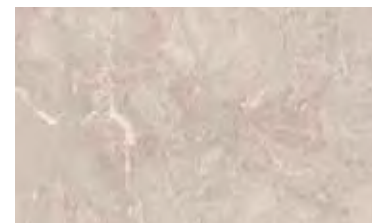
**BCT21049**

Grey Wall and Floor  
298x498mm  
M0009



**BCT21056**

Grey Wall  
298x498mm  
M0009



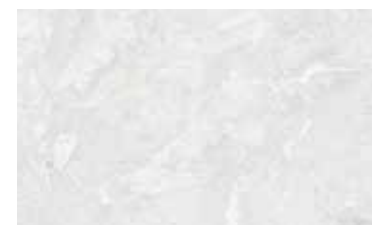
**BCT21049**

Grey Wall and Floor  
298x498mm  
P0009



**BCT20998**

Light Grey Wall  
298x498mm  
M0009



**BCT46714**

White Wall and Floor  
298x498mm  
M0009



**BCT46721**

White Wall  
298x498mm  
M0009





TECHNOLOGY

british ceramic tile

# MIMEO.

Beautiful stone effect ceramic tile printed using the latest in HD technology.

Brick work mosaics to complement the look



#### BCT53880

Dark Grey Brick Mosaic  
Wall and Floor  
300x300mm  
W0009



#### BCT53873

Light Grey Brick Mosaic  
Wall and Floor  
300x300mm  
W0009



#### BCT53897

White Brick Mosaic  
Wall and Floor  
300x300mm  
W0009





# MONO PORCELAIN.

Through bodied. Timeless monochrome never goes out of fashion. Use solid black to create drama, or crisp white to give a minimal look, or why not combine the two.



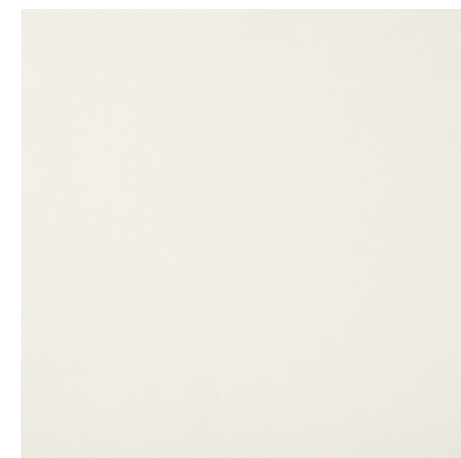
## ISC2560S

Black Floor  
600x600mm  
Q0007



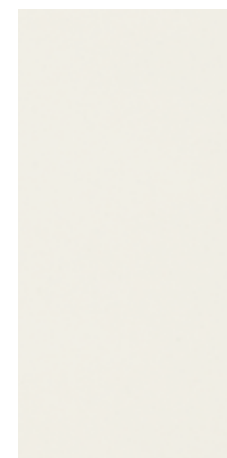
## ISC2558S

Black  
Wall and Floor  
300x600mm  
N0007



## ISC2561S

White Floor  
600x600mm  
Q0007



## ISC2559S

White  
Wall and Floor  
300x600mm  
N0007



[www.britishceramictile.com](http://www.britishceramictile.com) | Tel. 08450551275 | [enquiries@britishceramictile.com](mailto:enquiries@britishceramictile.com)

Porcelain Natural Stone Ceramic Gloss Matt Satin PEI Wear Rating

# MOSAICS

FROM  
british ceramic tile

## SHADES OF GREY.

From bold black to clean, crisp whites and multiple shades of grey in-between. The Shades of Grey range includes mosaics with iridescent, metal and foil finishes.



**BCT38399**  
Silver Metal/Glass  
Mixed Mosaic  
305x305mm  
W0017A  
G



**BCT38368**  
White Linear Glass  
Stone Mix Mosaic  
305x305mm  
W0006A  
G



**BCT38382**  
Metal and Foil Glass  
Black Mix Mosaic  
298x298mm  
W0006B  
G



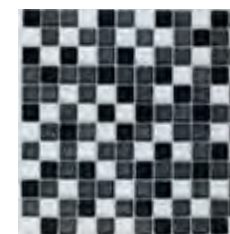
**BCT38351**  
Hammered Glass Shades  
Of Grey Mix Mosaic  
305x305mm  
W0006A  
G



**BCT38344**  
Stone and Glass  
Grey Mix Mosaic  
300x300mm  
W0006  
G



**BCT38375**  
Black Hammered  
Glass Mosaic  
305x305mm  
W0004A  
G



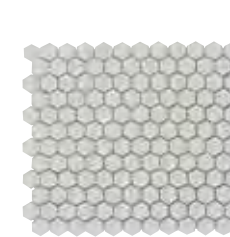
**BCT38337**  
Grey Glass  
Mix Mosaic  
300x300mm  
W0004  
G



**BCT38320**  
Hexagon Porcelain  
White Mosaic  
300x300mm  
W0002  
P G



**BCT38313**  
Hexagon Porcelain  
Black Mosaic  
300x300mm  
W0002  
P G



**BCT38559**  
White Hexagon  
Stone Mosaic  
305x265mm  
W0007  
NS M

Mosaics can  
create a unique  
look in any  
room!





**BCT38481**  
Limestone Honed  
Mosaic  
305x305mm  
W006A



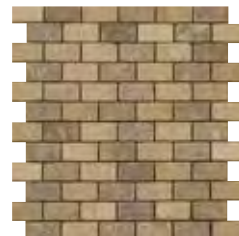
**BCT38528**  
Beige/Emperador  
Polished Mosaic  
305x305mm  
W0007A



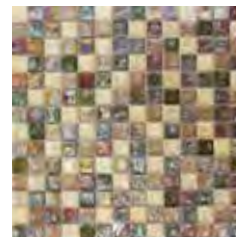
**BCT38535**  
Emperador Glass  
Polished Mosaic  
305x305mm  
W0007A



**M000113**  
Natural CM-114  
Mosaic  
305x305mm  
W0003



**M000117**  
Natural CM-104  
Mosaic  
305x305mm  
W0003



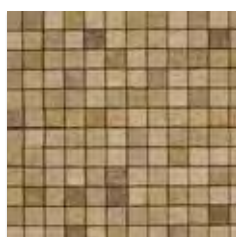
**BCT38474**  
Hammered Glass  
Natural Mosaic  
305x305mm  
W0005



**BCT38504**  
Glass/Stone  
Natural Mosaic  
300x300mm  
W0005



**BCT38290**  
Lemon Marble  
Brick Mosaic  
300x300mm  
W0002



**M000118**  
Natural CM-105  
Mosaic  
305x305mm  
W0003



**BCT38306**  
Lemon Marble  
Square Mosaic  
300x300mm  
W0002



**BCT38542**  
Natural Linear Glass  
Stone Mix Mosaic  
300x300mm  
W0006



**BCT38498**  
Stone/Glass/metal/  
Pearl Mix Mosaic  
300x300mm  
W00017



**M000120**  
Natural CM-107  
Mosaic  
305x305mm  
W0003



**M000119**  
Natural CM-106  
Mosaic  
305x305mm  
W0003



# MOSAICS

FROM  
british ceramic tile

Create a feature  
panel or  
introduce as  
a border.

# NATURALS.

The Naturals story celebrates the unique beauty of natural stone to offer a timeless look that will lavish walls and floors for years to come.

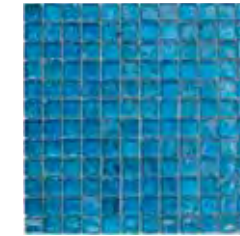


# MOSAICS

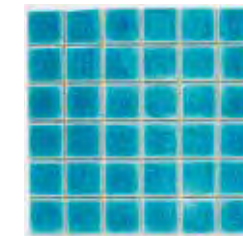
FROM  
british ceramic tile

# BRIGHT & BEAUTIFUL.

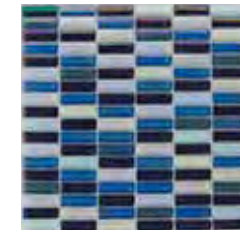
Colourful by nature, Bright and Beautiful features mood-boosting blues and aquas in a variety of finishes including hammered iridescent and lustre effects.



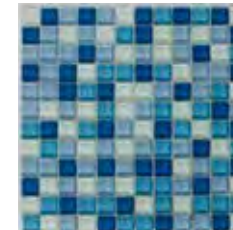
**BCT38467**  
Blue Hammered  
Glass Mosaic  
305x305mm  
W0004  
G



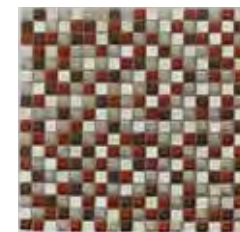
**BCT38450**  
Crackle Blue  
Ceramic Mosaic  
305x305mm  
W0004A  
C G



**BCT38429**  
Reactive Blue  
Glass Mosaic  
300x300mm  
W0006  
G



**BCT38443**  
Blue Glass  
Mix Mosaic  
300x300mm  
W0005  
G



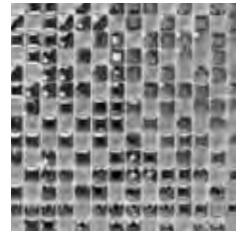
**BCT38436**  
Stone Autumn  
Mix Mosaic  
300x300mm  
W0004  
G

Create a  
feature panel  
or introduce  
a border.





**BCT38566**  
Mother of Pearl  
Mosaic Dark  
305x305mm  
W0009



**BCT38597**  
Faceted Glass  
Mosaic  
300x300mm  
W0007B



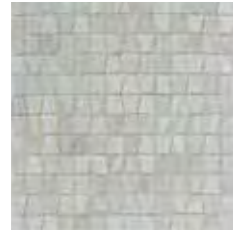
**BCT38580**  
Mother of Pearl  
Mosaic Light  
300x300mm  
W0007B



**BCT38610**  
Silver Foil  
Glass Mosaic  
300x300mm  
W0006



**BCT38627**  
Bronze Foil  
Glass Mosaic  
300x300mm  
W00017



**BCT38634**  
White Glacier  
Glass Mosaic  
318x303mm  
W0006



Mosaics can  
create a unique  
look in any  
room!

# MOSAICS

FROM  
british ceramic tile

# LUXE.

Luxe brings together unique shapes and luxurious finishes such as mother of pearl for the ultimate finish to any room.





# MOUNTAIN.

A timeless soft and glossy marble effect range of ceramic wall tiles in neutral shades.

\*This room shows Mountain Silver on the walls.



**BCT53729**  
Gold Wall  
298x598mm  
N0002  
C G



**BCT53712**  
Silver Wall  
298x598mm  
N0003  
C G



[www.britishceramictile.com](http://www.britishceramictile.com) | Tel. 08450551275 | [enquiries@britishceramictile.com](mailto:enquiries@britishceramictile.com)

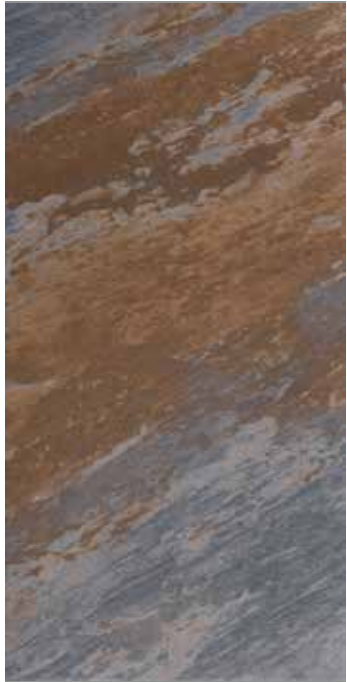
P Porcelain NS Natural Stone C Ceramic G Gloss M Matt S Satin PEI 4 Wear Rating







# MUMBAI.

Indian Slate is known for its impressive colour variation and textured finish. Featuring rich based colours, Mumbai Slate provides a comforting warm interior, combining the latest trend for natural textures. This indoor and outdoor oversized format is ideal to create spaces that flow from patio to conservatory to hallway.



**BCT56836**  
Slate Blue  
Floor  
450x900mm  
000077 - R10  




**BCT56843**  
Slate Ice  
Floor  
450x900mm  
000077- R10  


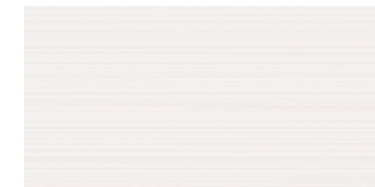


**BCT56850**  
Slate Taupe  
Floor  
450x900mm  
000077 - R10  




# NEW BRIGHTON.

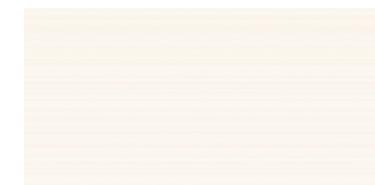
The simple addition of a gentle raised texture softens the surface, creating a ripple effect to add interest to the wall when light is reflected.



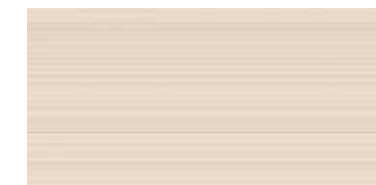
**BCT48909**  
Salt Wall  
248x498mm  
I0003  
C G



**BCT48893**  
Tide Wall  
248x498mm  
I0003  
C G



**BCT48916**  
Sand Wall  
248x498mm  
I0003  
C G



**BCT48923**  
Pier Wall  
248x498mm  
I0003  
C G

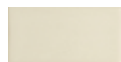


**BCT49852**  
Rock Wall  
248x498mm  
I0003  
C G

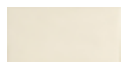


**BCT49869**  
Surf Wall  
248x498mm  
I0003  
C G

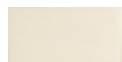




**K000432**  
Bianco Gloss Wall  
150x75mm  
A0003  
C G



**K000436**  
Bianco Matt Wall  
150x75mm  
A0003  
C M



**K000433**  
Bianco Crackle Wall  
150x75mm  
A0003  
C M



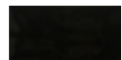
**K000437**  
Cream Wall  
150x75mm  
A0003  
C M



**K000434**  
Crackle Gris Wall  
150x75mm  
A0003  
C M



**K000439**  
Grafito Gris Wall  
150x75mm  
A0003  
C M



**K000438**  
Negro Wall  
150x75mm  
A0003  
C M



# ONDULATO.

Ceramic wall tile range in a textured brick style.



3D

**BCT47315**

Grey Brick  
Wall  
298x498mm  
M0009D

**BCT47322**

Grey Concrete  
Wall and Floor  
298x498mm  
M0009D



3D

**BCT47858**

Rustic Brick  
Wall  
298x498mm  
M0009D

**BCT48015**

Rustic Concrete  
Wall and Floor  
298x498mm  
M0009



TECHNOLOGY

british ceramic tile

# PARAGON.

Rustic Brick effect matt tiles with complementing Wall and Floor plains created using the latest 3D HD technology.





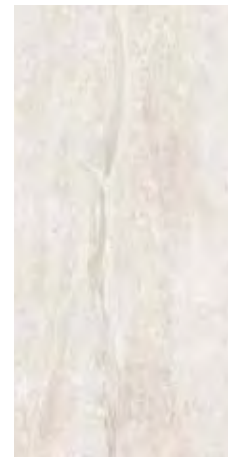


TECHNOLOGY

british ceramic tile

# PARALLEL.

Beautiful stone effect ceramic tiles printed using the latest in HD technology.



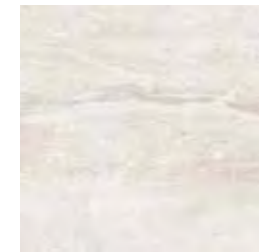
**BCT20393**  
White Wall  
298x598mm  
N0009  
C G



**BCT20386**  
White Wall  
248x498mm  
I0009  
C G



**BCT53866**  
White Anti- Slip Gloss  
Wall and Floor  
498x498mm  
P0009  
C G PEI 3



**BCT20409**  
White Anti- Slip Gloss  
Floor  
331x331mm  
K0009  
C G PEI 4



**BCT20348**  
Light Beige Wall  
298x598mm  
N0009  
C G



**BCT18734**  
Light Beige Wall  
248x498mm  
I0009  
C G



**BCT53828**  
Light Beige Anti- Slip Gloss  
Wall and Floor  
498x498mm  
P0009  
C G PEI 4



**BCT18840**  
Light Beige Anti- Slip Gloss  
Floor  
331x331mm  
K0009  
C G PEI 4

5 Natural  
shades of stone  
effect ceramic  
tiles available



**BCT15956**  
Light Grey Wall  
298x598mm  
N0009



**BCT38658**  
Light Grey Wall  
248x498mm  
10009



**BCT53842**  
Light Grey Anti- Slip Gloss  
Wall and Floor  
498x498mm  
P0009



**BCT15963**  
Light Grey Anti- Slip Gloss  
Floor  
331x331mm  
K0009



5 Natural  
shades of stone  
effect ceramic  
tiles available



**BCT15987**  
Dark Grey Wall  
298x598mm  
N0009



**BCT20622**  
Dark Grey Wall  
248x498mm  
10009



**BCT53859**  
Dark Grey Anti- Slip Gloss  
Wall and Floor  
498x498mm  
P0009



**BCT15994**  
Dark Grey Anti- Slip Gloss  
Floor  
331x331mm  
K0009



TECHNOLOGY

british ceramic tile

# PARALLEL.

Beautiful stone effect ceramic tiles printed  
using the latest in HD technology.





TECHNOLOGY

british ceramic tile

# PARALLEL.

Beautiful stone effect ceramic tiles printed using the latest in HD technology.

Natural  
imperfections  
removed

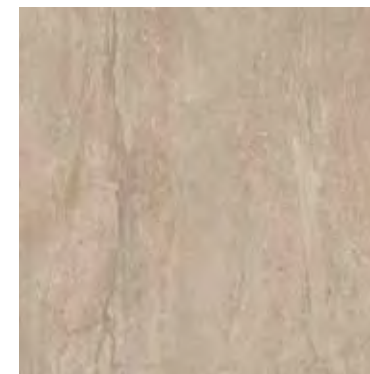
5 Natural  
shades of stone  
effect ceramic  
tiles available



**BCT20362**  
Dark Beige Wall  
298x598mm  
N0009  
C G



**BCT20355**  
Dark Beige Wall  
248x498mm  
I0009  
C G



**BCT53835**  
Dark Beige Anti- Slip Gloss  
Wall and Floor  
498x498mm  
P0009  
C G PEI 4



**BCT20379**  
Dark Beige Anti- Slip Gloss  
Floor  
331x331mm  
K0009  
C G PEI 4





# PARIAN.

Be on-trend with this set of 12 ceramic patchwork tiles. With four different designs, it is perfect for creating a statement wall or floor!

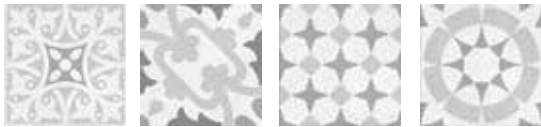


**BCT41948**  
Set of 12 Wall and Floor Coloured Décors  
4 Designs  
142x142mm  
E0005  
C S PEI 4

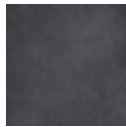


**BCT41962**  
Cream Plain  
Wall and Floor  
142x142mm  
E0005  
C S PEI 4

Can be used  
on walls  
and floors



**BCT41955**  
Set of 12 Wall and Floor Grey Décors  
4 Designs  
142x142mm  
E0005  
C S PEI 4



**BCT41986**  
Dark Grey Plain  
Wall and Floor  
142x142mm  
E0005  
C S PEI 1



**BCT41993**  
Mid Grey Plain  
Wall and Floor  
142x142mm  
E0005  
C S PEI 2







# QUEENSTOWN.

A modern and sleek porcelain tile which does not break the bank. If you want to play it safe, Queenstown is the range for you. Its comforting design in subtle grey hues works a treat in any room.

NEW



**BCT57390**  
Dark Grey  
Floor  
600x600mm  
Q006C  
P G



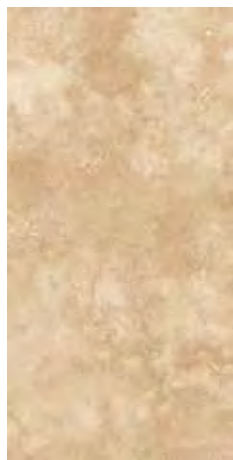
**BCT41955**  
Grey  
Floor  
600x600mm  
Q006C  
P G



**BCT57376**  
Dark Grey  
Wall and Floor  
600x298mm  
N006C1  
P G



**BCT41955**  
Grey  
Wall and Floor  
600x298mm  
N006C1  
P G



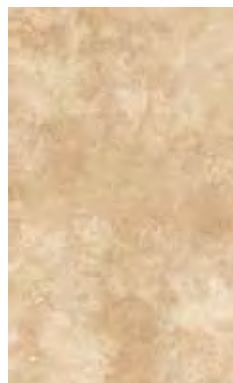
#### BCT20256

Noce  
Wall and Floor  
298x598mm  
N0002



#### BCT01546

Noce Gloss Wall  
298x598mm  
N0002



#### BCT01522

Noce  
Wall and Floor  
298x498mm  
M0002



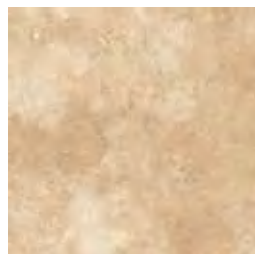
#### BCT01560

Faux Mosaic Wall  
248x498mm  
I0002D



#### BCT01553

Faux Mosaic Wall  
248x498mm  
I0002D



#### BCT20270

Noce  
Floor  
331x331mm  
K0002



#### BCT47193

Noce Anti-Slip Gloss Beige  
Floor  
331x331mm  
K0002



Faux mosaic  
gloss or satin  
tile can be laid  
horizontal or  
vertical



# RAPOLANO.

Ceramic range of wall and floor tiles in gloss or matt with matching floors,  
all in a natural stone effect.





# RAPOLANO.

Ceramic range of wall tiles in gloss or matt with matching floors, all in a natural stone effect.

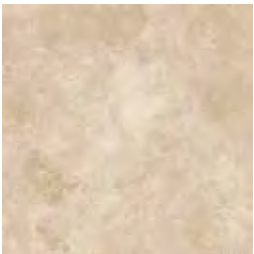


**BCT20225**  
Marfil  
Wall and Floor  
298x598mm  
NO002  
C M PEI 3

**BCT01508**  
Marfil Gloss Wall  
298x598mm  
NO002  
C G



**BCT01485**  
Marfil  
Wall and Floor  
298x498mm  
M0002  
C M PEI 3



**BCT47209**  
Marfil Anti-Slip Gloss Beige  
Floor  
331x331mm  
K0002  
C G PEI 4



**BCT39716**  
Grey  
Wall and Floor  
298x598mm  
NO002  
C M PEI 3



**BCT39709**  
Grey  
Floor  
331x331mm  
K0002  
C M PEI 3



**BCT39730**  
Grey  
Wall and Floor  
298x498mm  
M0002  
C M PEI 4



**BCT47216**  
Grey Anti-Slip Gloss  
Floor  
331x331mm  
K0002  
C G PEI 4



# ROCK.

The surface of the porcelain Rock range is adorned with a unique tonal design that perfectly reflects the diversified structure of natural stones. The organic design and natural colour palette of Rocks are varied and unique, just like in nature where we will never find two identical natural stones. These rectified tiles can be purchased in low slip risk matt and bush hammered, perfect for wet rooms and hallways, or with a spectacular high polished finish. As a frost resistant double loaded porcelain, the versatile Rock range can be used inside or outside the home on walls or floors.

Full range  
available in 4  
colours, 2 sizes  
and 3 finishes

3 finishes  
bush hammered,  
polished and  
matt



Bush Hammered



Matt



Polished

NEW

## BCT56010

Beige  
Bush Hammered  
Wall and Floor  
298x598mm  
N0007D - R11



## BCT56119

Coffee  
Bush Hammered  
Wall and Floor  
298x598mm  
N0007D - R11



## BCT55877

Beige  
Bush Hammered  
Wall and Floor  
598x598mm  
Q0009D - R11



## BCT56126

Coffee  
Bush Hammered  
Wall and Floor  
598x598mm  
Q0009D - R11



## BCT55983

Beige  
Wall and Floor  
298x598mm  
N0007E R10



## BCT56072

Coffee  
Wall and Floor  
298x598mm  
N0007E R10



## BCT55990

Beige  
Wall and Floor  
598x598mm  
Q0009D - R10



## BCT56089

Coffee  
Wall and Floor  
598x598mm  
Q0009D - R10



## BCT56003

Beige Polished  
Wall and Floor  
298x598mm  
N0007E



## BCT56096

Coffee Polished  
Wall and Floor  
298x598mm  
N0007E



## BCT55860

Beige Polished  
Wall and Floor  
598x598mm  
Q0009D



## BCT56102

Coffee Polished  
Wall and Floor  
598x598mm  
Q0009D







# ROCK.

The surface of the porcelain Rock range is adorned with a unique tonal design that perfectly reflects the diversified structure of natural stones. The organic design and natural colour palette of Rocks are varied and unique, just like in nature where we will never find two identical natural stones. These rectified tiles can be purchased in low slip risk matt and bush hammered, perfect for wet rooms and hallways, or with a spectacular high polished finish. As a frost resistant double loaded porcelain, the versatile Rock range can be used inside or outside the home on walls or floors.

Full range  
available in 4  
colours, 2 sizes  
and 3 finishes

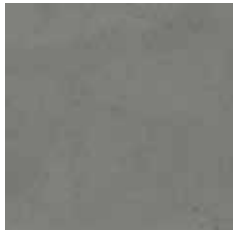
3 finishes  
bush hammered,  
polished and  
matt



Bush Hammered



Matt



Polished

NEW

#### BCT55969

Dark Grey  
Bush Hammered  
Wall and Floor  
298x598mm  
N0007D - R11



#### BCT56058

Light Grey  
Bush Hammered  
Wall and Floor  
298x598mm  
N0007D - R11



#### BCT55976

Dark Grey  
Bush Hammered  
Wall and Floor  
598x598mm  
Q0009D - R11



#### BCT56065

Light Grey  
Bush Hammered  
Wall and Floor  
598x598mm  
Q0009D - R11



#### BCT55921

Dark Grey  
Wall and Floor  
298x598mm  
N0007E R10



#### BCT56027

Light Grey  
Wall and Floor  
298x598mm  
N0007E R10



#### BCT55938

Dark Grey  
Wall and Floor  
598x598mm  
Q0009D - R10



#### BCT56034

Light Grey  
Wall and Floor  
598x598mm  
Q0009D - R10



#### BCT55945

Dark Grey Polished  
Wall and Floor  
298x598mm  
N0007E



#### BCT56041

Light Grey Polished  
Wall and Floor  
298x598mm  
N0007E



#### BCT55952

Dark Grey Polished  
Wall and Floor  
598x598mm  
Q0009D



#### BCT55884

Light Grey Polished  
Wall and Floor  
598x598mm  
Q0009D

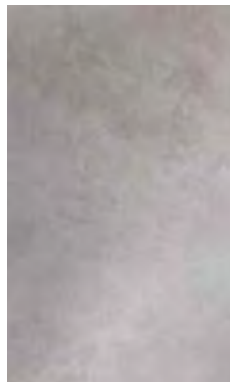




**BCT53798**  
Light Grey  
Wall & Floor  
298x498mm  
M0002A  
C M PEI 3



**BCT53781**  
Cream  
Wall & Floor  
298x498mm  
M0002A  
C M PEI 3



**BCT53804**  
Dark Grey  
Wall & Floor  
298x498mm  
M0002A  
C M PEI 3



**BCT53774**  
Beige  
Wall & Floor  
298x498mm  
M0002A  
C M PEI 4



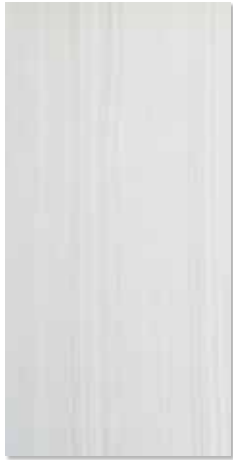
# SEATON.

Natural effect matt finish ceramic tiles suitable for use on walls and floors in any room or the house.





**BCT04165**  
Beige Wall  
298x598mm  
N0009



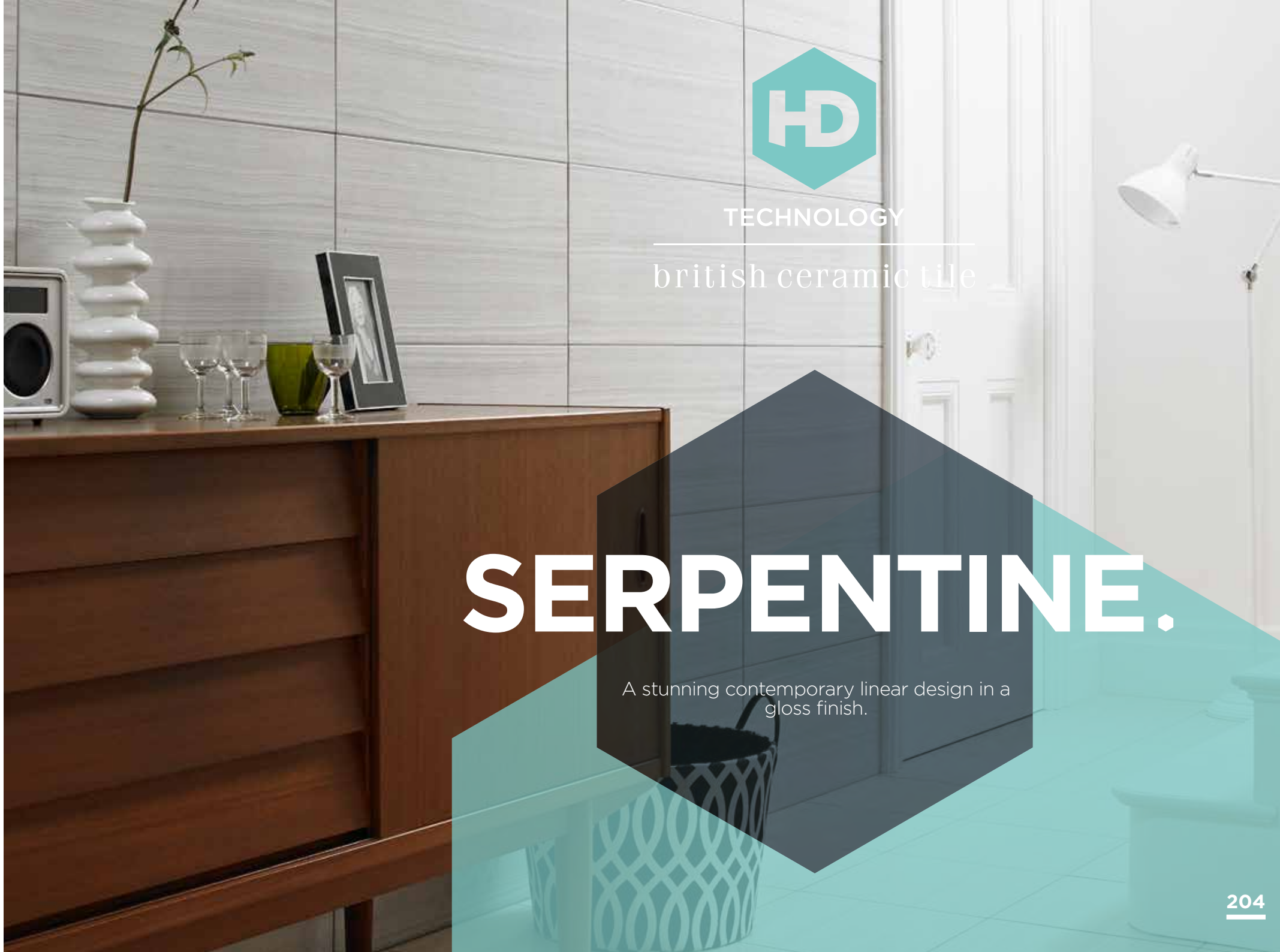
**BCT04172**  
Grey Wall  
298x598mm  
N0009



**BCT38498**  
Stone/Glass/Metal/  
Pearl Mix Mosaic  
300x300mm  
W0017



**BCT38382**  
Stone/Glass/Metal/  
Black Mix Mosaic  
298x298mm  
W0006B



TECHNOLOGY

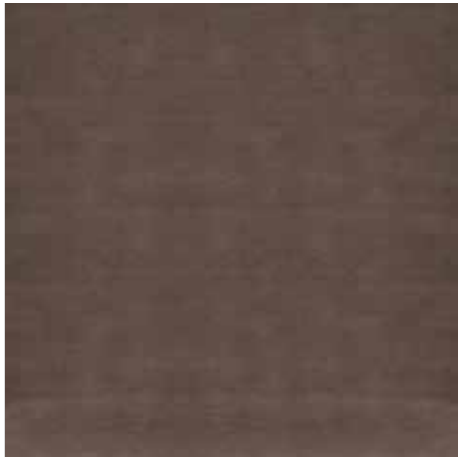
british ceramic tile

# SERPENTINE.

A stunning contemporary linear design in a gloss finish.



**BCT30720**  
Beige  
Floor  
600x600mm  
Q0008 -R10  
P M



**BCT30805**  
Beige  
Wall and Floor  
298x598mm  
N0007 - R10  
P M

**BCT30737**  
Mocha  
Floor  
600x600mm  
Q0008 -R10  
P M

**BCT30812**  
Mocha  
Wall and Floor  
298x598mm  
N0007 - R10  
P M



**BCT30744**  
Grey  
Floor  
600x600mm  
Q0008 - R10  
P M



**BCT30829**  
Grey  
Wall and Floor  
298x598mm  
N0007 - R10  
P M

**BCT30751**  
Graphite  
Floor  
600x600mm  
Q0008 - R10  
P M

**BCT30836**  
Graphite  
Wall and Floor  
298x598mm  
N0007 - R10  
P M



Anti-slip  
rectified  
porcelain



# SHIFT.

A high quality anti-slip, rectified porcelain range available in four sophisticated colours.





TECHNOLOGY

british ceramic tile

# SLATE.

Rustic by design, but practical by nature, the collection is incredibly versatile and brings a strong, textural quality to walls and floors, seamlessly recreating a rustic slate-effect from floor to ceiling.



**BCT12986**

Grey Wall  
248x498mm  
I0009



**BCT24156**

Black Wall  
248x498mm  
I0009



3D

**BCT13389**

Splitface Grey Wall  
248x498mm  
I0009D



3D

**BCT13891**

Splitface Black Wall  
248x498mm  
I0009D



**BCT39778**

Grey Floor  
498x498mm  
P0009



**BCT39747**

Black Floor  
498x498mm  
P0009



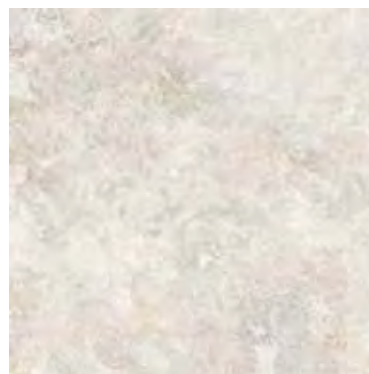




**BCT12719**  
Oyster Wall  
248x498mm  
10009



**BCT13419**  
Splitface Oyster Wall  
248x498mm  
10009D



**BCT39754**  
Oyster Floor  
498x498mm  
P0009



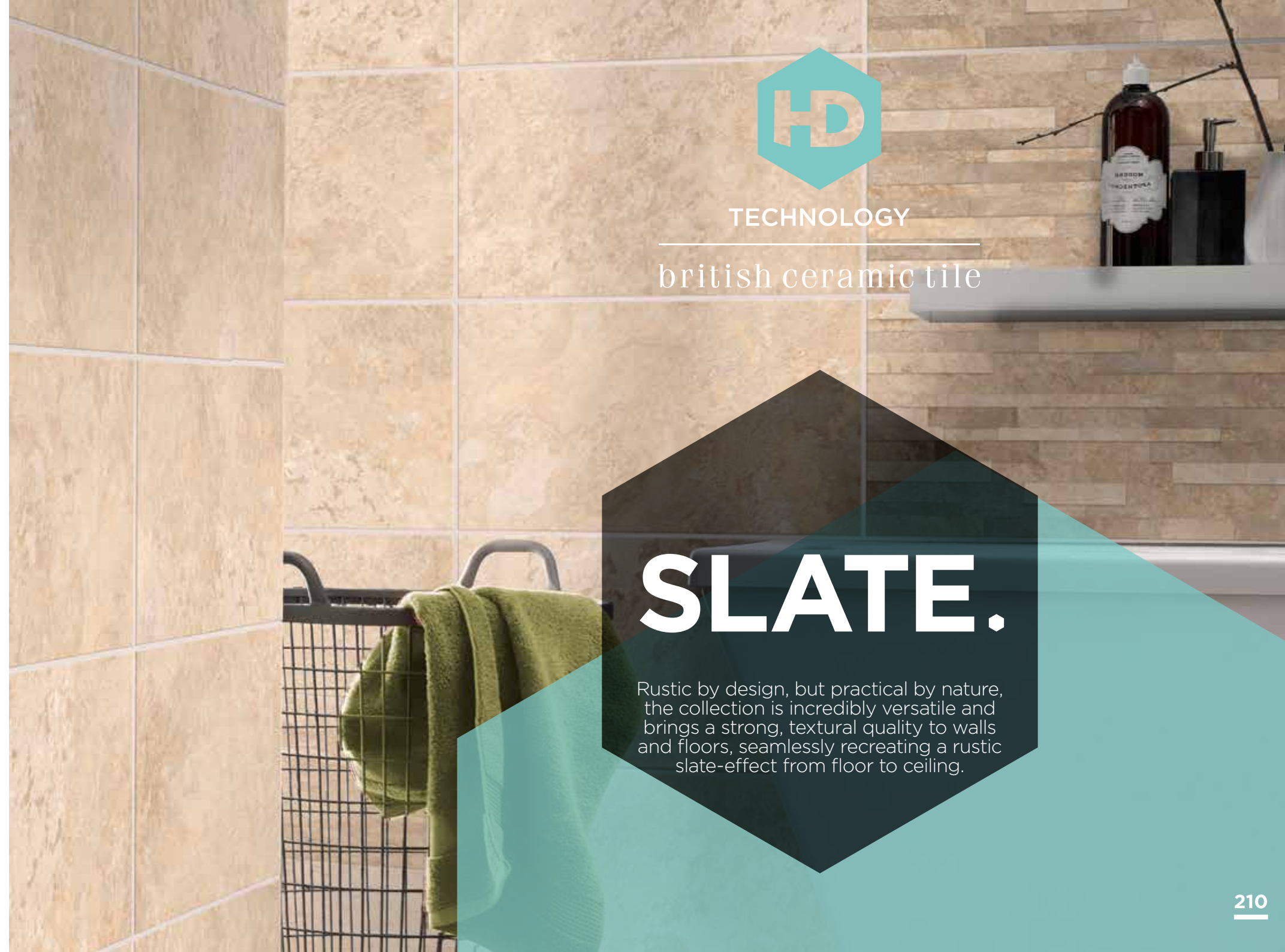
**BCT12856**  
Beige Wall  
248x498mm  
10009



**BCT12993**  
Splitface Beige Wall  
248x498mm  
10009D



**BCT39761**  
Beige Floor  
498x498mm  
P0009



TECHNOLOGY

british ceramic tile

# SLATE.

Rustic by design, but practical by nature, the collection is incredibly versatile and brings a strong, textural quality to walls and floors, seamlessly recreating a rustic slate-effect from floor to ceiling.





# SPLENDID.

Three fabulous wood effect porcelain tiles with a matt finish and realistic wood texture, all in a large plank format.



**BCT25153**  
Walnut Floor  
1193x197mm  
U0008  
P M PEI 2



**BCT23692**  
Ash Floor  
1193x197mm  
U0008  
P M PEI 2



**BCT24651**  
Oak Floor  
1193x197mm  
U0008  
P M PEI 2



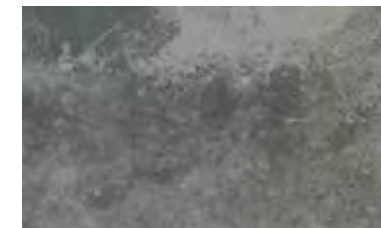


TECHNOLOGY

british ceramic tile

# SNOWDONIA.

A beautiful mini splitface structured tile inspired by natural slate textures, with a co-ordinating riven Wall and Floor tile.



**BCT41801**

Riven Grey Wall and Floor  
298x498mm  
M0009

C M PEI 3



3D

**BCT13389**

Grey Mini Splitface Wall  
298x498mm  
I0009D

C M



**BCT41818**

Riven Brown Wall and Floor  
298x498mm  
M0009

C M PEI 3



3D

**BCT41832**

Brown Mini Splitface Wall  
298x498mm  
I0009D

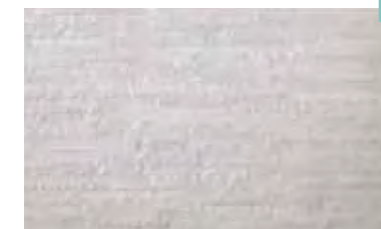
C M



**BCT53811**

Riven White Wall and Floor  
298x498mm  
M0009A

C M



3D

**BCT53651**

White Mini Splitface Wall  
298x498mm  
M0009DA

C M





**BCT25184**  
Grey Floor  
595x595mm  
Q0008  
P M PEI 2



**BCT25276**  
Beige Floor  
595x595mm  
Q0008  
P M PEI 4



**BCT25368**  
Truffle Floor  
595x595mm  
Q0008  
P M PEI 4



**BCT25450**  
White Floor  
595x595mm  
Q0008  
P M PEI 3



# SUBLIME.

A stunning gloss floor tile in a large format linear effect porcelain in four subtle colours.

# TANNER.

A range of natural slate effect porcelain tiles. Versatile and flexible, this range has an R12 slip rating making it perfect for use in wet rooms.

Tanner Porcelain is available in four natural colourways with coordinating mosaics.

Perfect for  
use in  
wet rooms

Slip ratings  
R10 and R12



**BCT53569**  
Anthracite Mosaic  
Wall and Floor  
310x310mm  
W0010 - R10  
P M



**BCT53576**  
Stone Mosaic  
Wall and Floor  
310x310mm  
W0010 - R12  
P M



**BCT53590**  
Sand Mosaic  
Wall and Floor  
310x310mm  
W0010 - R10  
P M



**BCT53583**  
Beige Mosaic  
Wall and Floor  
310x310mm  
W0010 - R12  
P M



**BCT53521**  
Anthracite  
Wall and Floor  
310x620mm  
N0006C - R10  
P M



**BCT53538**  
Stone  
Wall and Floor  
310x620mm  
N0006C - R12  
P M



**BCT53552**  
Sand  
Wall and Floor  
310x620mm  
N0006C - R12  
P M



**BCT53545**  
Beige  
Wall and Floor  
310x620mm  
N0006C - R12  
P M





**BCT43706**

GeoTile

2 of each design per pack

Wall and Floor

148x148mm

G00018D

**P M PEI 3**

T E D B A K E R  
L O N D O N

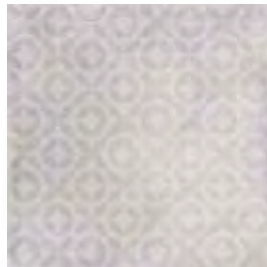
— BROUGHT TO YOU BY —  
british ceramic tile

**GEOTILE.**

Inspired by the Edwardian tiles that lead up the pathways of London's iconic townhouses, GeoTile threads a sleek tonal grey colour way with Ted's favourite geometric prints.

Fancy flourishes that look stylish in any room, GeoTile can be used inside or out and come in a pack of 24 with two of each design.





**BCT50599**  
Geometric Wall and Floor  
331x331mm  
K0018  
**C M PEI 4**



TED BAKER  
LONDON

— BROUGHT TO YOU BY —  
british ceramic tile

# GEOMETRIC.

Fusing two production techniques and two of Teds designs has created this geometric tile that has both a print and a texture on the surface making it that little bit different. Can be used on walls and floors in all rooms.





**BCT45779**  
 Grey TacTile Wall  
 298x498mm  
 M0018D  
 C M



**BCT45786**  
 White TacTile Wall  
 298x498mm  
 M0018D  
 C M

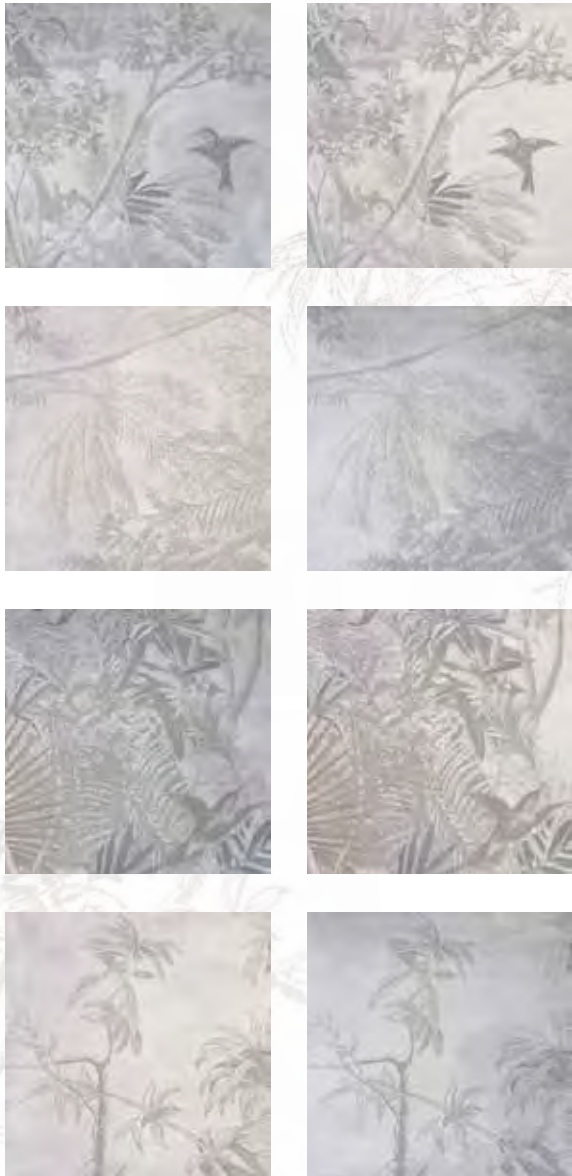


TED BAKER  
 LONDON

— BROUGHT TO YOU BY —  
 british ceramic tile

TACTILE.

Get a feel for Ted Baker with TacTile, a selection of textured tiles that brings a touch of style to the home. Inspired by some of Ted's finest threads, these tiles come in matt white and tonal grey and co-ordinate perfectly with the VersaTile range - a match made in heaven.



**BCT50575**  
Paradise Wall and Floor  
331x331mm  
V0018D  
**C M PEI 4**

TED BAKER  
LONDON

— BROUGHT TO YOU BY —  
british ceramic tile

# PARADISE.

Taking Ted's popular paradise print in a variety of muted shades. This range comes in a random pack allowing you to create a truly unique patchwork effect on walls and floors. To make it that little bit special some of the tiles have the addition of a lustre effect which catches the light beautifully.







**BCT43751**  
Brown ParqTile  
Wall and Floor  
148x148mm  
G0018D  
P M PEI 3



**BCT43744**  
Grey ParqTile  
Wall and Floor  
148x148mm  
G0018D  
P M PEI 2



TED BAKER  
LONDON

— BROUGHT TO YOU BY —  
british ceramic tile

# PARQTILE.

Ted's branched out to create a range of parquet-effect tiles that can be used on walls or floors, inside or out. Available in traditional brown and contemporary grey, these tiles are finished with an authentic grain effect, and co-ordinate perfectly with the VersaTile range. Have it your own way by creating a pattern or patchwork effect.





**BCT50582**  
Partridge  
Wall and Floor  
331x331mm  
V0018D  
**C M PEI 4**



T E D B A K E R  
L O N D O N

— BROUGHT TO YOU BY —  
british ceramic tile

# PARTRIDGE.

A classic design that mimics the popular cemento look. Each pack of 9 has a random mix of 4 designs that are ever so slightly different to ensure the authenticity of a handmade tile. Shades of grey square tiles with a textured feel for walls and floors.

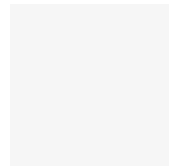


**BCT43720**

Small Mid Grey  
VersaTile Wall and Floor  
148x148mm  
G0018

**P M PEI 2****BCT43737**

Small Dark Grey  
VersaTile Wall and Floor  
148x148mm  
G0018

**P M PEI 1****BCT43713**

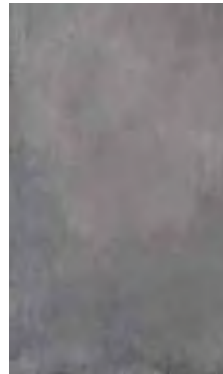
Small White  
VersaTile Wall and Floor  
148x148mm  
G0018

**P M PEI 4****BCT45748**

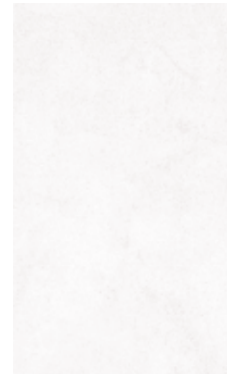
Big Light Grey  
VersaTile Wall and Floor  
298x498mm  
M0018D

**C M PEI 3****BCT45755**

Big Mid Grey  
VersaTile Wall and Floor  
298x498mm  
M0018D

**C M PEI 3****BCT45762**

Big Dark Grey  
VersaTile Wall and Floor  
298x498mm  
M0018D

**C M PEI 3****BCT45793**

Big White  
VersaTile Wall and Floor  
298x498mm  
M0018D

**C M PEI 4****BCT50612**

VersaTile Light Grey  
Wall and Floor  
331x331mm  
K0018D

**C M PEI 4****BCT50605**

VersaTile Mid Grey  
Wall and Floor  
331x331mm  
K0018D

**C M PEI 3**

# TED BAKER

## LONDON

— BROUGHT TO YOU BY —  
british ceramic tile

# VERSATILE.

A range of no ordinary tiles, the VersaTile collection is functional, with a touch of flair. Simple yet stylish, they can be coordinated with almost all of Ted's tiles and come in three shades of grey specially chosen to make your house a home.



**ISC3056**

Ivory Wall and Floor  
310x560mm  
N0008



**ISC3054**

Black Wall and Floor  
310x560mm  
N0008



**ISC3058**

Green Wall and Floor  
310x560mm  
N0008



# TIMBAO.

Porcelain range of wall and floor tiles in a slate effect with scored option.





TECHNOLOGY

british ceramic tile

# TROPHY.

A timeless and natural limestone effect range suitable for the use on wall and floors. Available in two matt classic colourways giving a feel of simplicity to any room.



## BCT47179

White  
Wall and Floor  
298x598mm  
N0009



## BCT47186

Gold  
Wall and Floor  
298x598mm  
N0009





**VA03193**  
Racing Green  
Wall  
152x76mm  
A0016D  
C G



**VA2007**  
Honey  
Wall  
152x76mm  
A0016D  
C G



**VA03186**  
Teapot Brown  
Wall  
152x76mm  
A0016D  
C G



**VA2005**  
Peacock  
Wall  
152x76mm  
A0016D  
C G



**VA2006**  
Olive  
Wall  
152x76mm  
A0016D  
C G

# V&A

— BROUGHT TO YOU BY —  
british ceramic tile

## PUDDLE GLAZE.

The Puddle Glaze tiles are made in a truly unique way with a translucent glaze that melts, puddles and pools across the face of the tile. Flowing to various degrees, resulting in a variation in shade across colours. Based on warm, rich colours found in the Arts and Crafts Movement and Iznik designs, they are best used in combination as borders or as an expanse of pure colour. V&A Puddle Glaze tiles express uniqueness, charm and beauty.



# V&A

— BROUGHT TO YOU BY —  
british ceramic tile

# BASICS.

The range of décors in the V&A Tile Collection is perfectly complemented by co-ordinating plain tiles and a selection of moulded borders which are based on classical motifs, popularised in the late 19th Century.



**VA7001**  
White Dot Wall  
152x12mm  
X0016



**VA1001**  
White Wall  
152x152mm  
E0016



**VA2001**  
White Wall  
152x76mm  
A0016



**VA4001**  
White Egg & Dart Wall  
152x63mm  
X0016D3



**VA3001**  
White Albion Wall  
152x38mm  
X0016D1



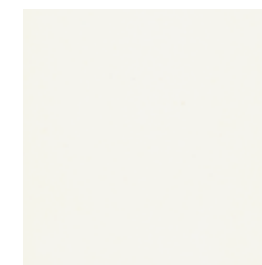
**VA8001**  
White Bevel Wall  
150x20mm  
X0016D



**VA5001**  
White Etruria Wall  
152x76mm  
X0016D1



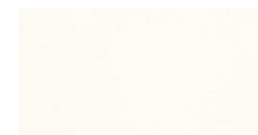
**VA6001**  
White Serpentine Wall  
152x25mm  
X0016D



**VA7002**  
Cream Dot Wall  
152x12mm  
X0016



**VA1002**  
Cream Wall  
152x152mm  
E0016



**VA8002**  
Cream Bevel Wall  
150x20mm  
X0016D



**VA6002**  
Cream Serpentine Wall  
152x25mm  
X0016D



**VA2002**  
Cream Wall  
152x76mm  
A0016



**VA4002**  
Cream Egg & Dart Wall  
152x63mm  
X0016D3



**VA3002**  
Cream Albion Wall  
152x38mm  
X0016D1





**VA1003**  
Cobalt Wall  
152x152mm  
E0016  
C G



**VA03155**  
Cobalt Wall  
152x76mm  
A0016  
C G



**VA4003**  
Cobalt Egg & Dart Wall  
150x63mm  
X0016D3  
C G



**VA3003**  
Cobalt Albion Wall  
152x38mm  
X0016D1  
C G



**VA7003**  
Cobalt Dot Wall  
152x12mm  
X0016  
C G



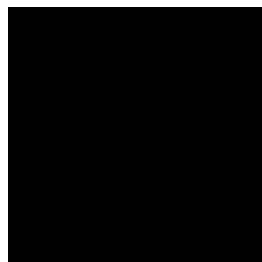
**VA8003**  
Cobalt Bevel Wall  
150x20mm  
X0016D  
C G



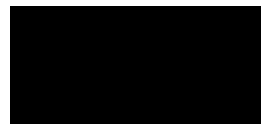
**VA5003**  
Cobalt Etruria Wall  
152x76mm  
X0016D1  
C G



**VA6003**  
Cobalt Serpentine Wall  
150x25mm  
X0016D  
C G



**VA1004**  
Black Wall  
152x152mm  
E0016  
C G



**VA03148**  
Black Wall  
152x76mm  
A0016  
C G



**VA3004**  
Black Albion Wall  
152x38mm  
X0016D1  
C G



**VA7004**  
Black Dot Wall  
152x12mm  
X0016  
C G



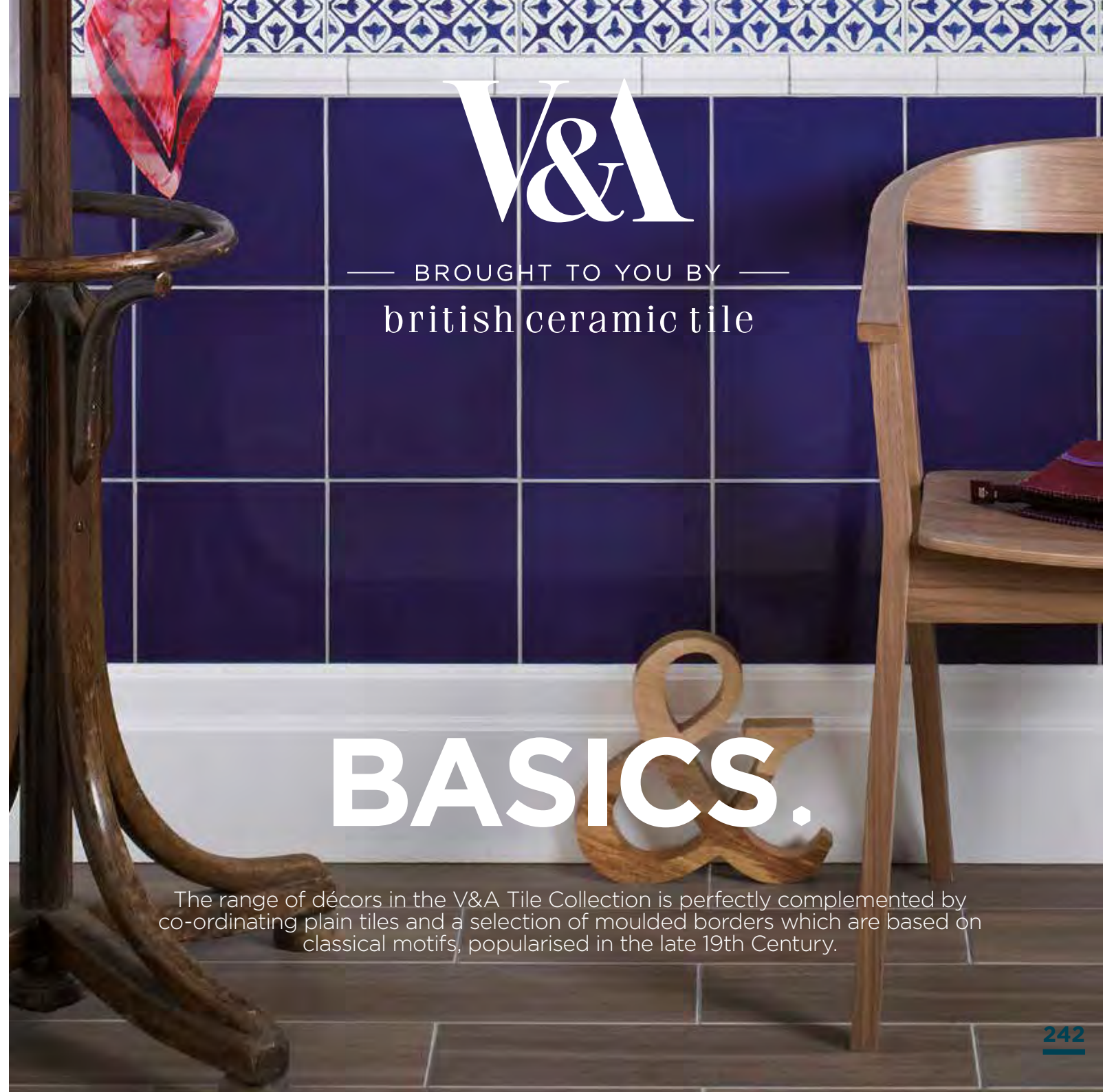
**VA8004**  
Black Bevel Wall  
150x20mm  
X0016D  
C G



**VA5004**  
Black Etruria Wall  
152x76mm  
X0016D1  
C G



**VA6004**  
Black Serpentine Wall  
152x25mm  
X0016D  
C G



V&A  
— BROUGHT TO YOU BY —  
british ceramic tile

BASICS.

The range of décors in the V&A Tile Collection is perfectly complemented by co-ordinating plain tiles and a selection of moulded borders which are based on classical motifs, popularised in the late 19th Century.

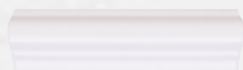




**VA901036**  
Clematis Décor Wall  
152x152mm  
E0016D2



**VA901033**  
Clematis Décor Wall  
152x76mm  
A0016D2



**VA3001**  
White Albion Wall  
152x38mm  
X0016D1



**VA7001**  
White Dot Wall  
152x12mm  
X0016



V&A

— BROUGHT TO YOU BY —  
british ceramic tile

# CLEMATIS.

Lewis F. Day was a designer and writer during the late 19th and early 20th century advocating originality of design based on natural forms and high standards of craftsmanship. Lewis F. Day's Clematis tile, held in the Museum's Ceramics gallery, features striking turquoise glazes within soft petal contours.





**VA8003**  
Cobalt Bevel Wall  
150x20mm  
X0016D



**VA04459**  
Cobalt 9 Square Wall  
152x152mm  
E0016D2



**VA04466**  
White 9 Square Wall  
152x152mm  
E0016D



V&A

— BROUGHT TO YOU BY —  
british ceramic tile

9 SQUARE.

Many of William De Morgan's drawings are based around repeating patterns that conjoin to create a larger, continuous design. An original replicated design, 9 Square offers complete freedom for horizontal and vertical borders, panels, chequerboard patterns and all-over effects, adapting to suit all tastes.



# V&A

— BROUGHT TO YOU BY —  
british ceramic tile

# METRO.

Tapping in to our obsession for Victorian styling and elongated brick shapes, V&A Metro offers six large format bevelled tiles. Each tile has a rich, transparent glaze that gives tonal movement, making each tile slightly different to the next depending on how the light catches it.



**VA04282**  
White Wall  
148x498mm  
F00016D



**VA04299**  
Frieze Wall  
148x498mm  
F00016D



**VA04336**  
Anthracite Wall  
148x498mm  
F00016D



**VA04312**  
Sykes Blue Wall  
148x498mm  
F00016D



**VA04329**  
Peacock Wall  
148x498mm  
F00016D



**VA04305**  
Webb Grey Wall  
148x498mm  
F00016D





# V&A

— BROUGHT TO YOU BY —  
british ceramic tile



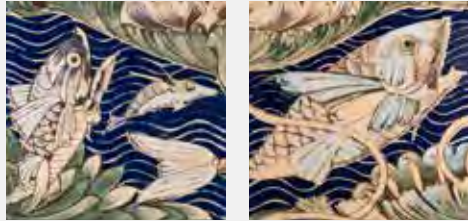
**VA04473**  
Morgan Décor Wall  
152x152mm  
E0016D2  
C G



# MORGAN.

De Morgan's inspiration came from Middle Eastern ceramics, with their rich deep colours and dynamic floral designs. De Morgan produced thousands of designs for tiles and this motif is just one of the 820 in the collection of the Victoria and Albert Museum.





**VA901024**

Fish Part 4 Tile Panel Wall  
152x152mm  
E0016D3



**VA901022**

Fish Part 2 Tile Panel Wall  
152x76mm  
A0016D2



**VA6003**

Cobalt Serpentine Wall  
150x25mm  
X0016D



V&A

— BROUGHT TO YOU BY —  
british ceramic tile

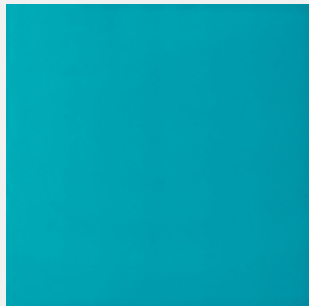
# FISH PANEL.

William De Morgan was one of the most original craftsmen of the Arts and Crafts Movement. From 1859 he studied painting at the Royal Academy but moved quickly into the field of design applying his skills to the production of stained glass and ceramics. This design, the most widely recognised from De Morgan, and the most faithful to the original, emulates the detail from the original brushstrokes.





**VA04404**  
Santiago Décor Wall  
198x198mm  
G0016D



**VA03216**  
Turquoise Wall  
198x198mm  
G0016



# V&A

— BROUGHT TO YOU BY —  
british ceramic tile

# SANTIAGO.

With its brilliant colouring and decorative motif, Santiago evokes the distinguished ceramic traditions of the Middle East. The design is based on a ceramic tile from Syria made in the 16th or 17th century. Perfect throughout the home, why not try using tiles in the bedroom?



# V&A

— BROUGHT TO YOU BY —  
british ceramic tile

# GALICIA AND TEMARA.

With slightly different design origins, these decorative tiles have been created with each other in mind to create a real style statement when mix and matched. Alternatively, for a more classic look, tile your favourite alongside the co-ordinating plain tile in white or indigo.

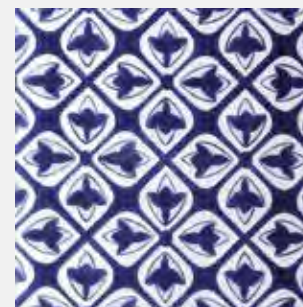


**VA04398**

Galicia Décor Wall

198x198mm

G0016D



**VA04411**

Temara Décor Wall

198x198mm

G0016D







**VA03902**  
Omar Multicolour Floor  
331x331mm  
K0016D  
C G PEI 3



**VA04381**  
Omar Décor Wall  
Multi Colour  
152x152mm  
E0016D  
C G



**VA04503**  
Mina Décor Wall  
Blue/Green  
152x152mm  
E0016D  
C G



V&A

— BROUGHT TO YOU BY —  
british ceramic tile

# OMAR AND MINA.

Omar & Mina are based on one of the original drawings illustrated in Owen Jones' The Grammar of Ornament and are reflective of Islamic art's respect for nature and regard for mathematical order and harmony.





**VA3004**  
Black Albion Wall  
150x38mm  
X0016D1



**VA04497**  
Owen Jones  
Green and Black  
Décor Wall  
152x152mm  
E0016D1



**VA04480**  
Owen Jones  
Cobalt and Black  
Décor Wall  
152x152mm  
E0016D1



# V&A

— BROUGHT TO YOU BY —  
british ceramic tile

# OWEN JONES.

This range is from Owen Jones who carefully studied design history and is an expert source for many British pattern manufacturers. The original tiles appeared in the Alhambra Court of the Crystal Place, Sydenham until its destruction by fire in 1936.



# V&A

— BROUGHT TO YOU BY —  
british ceramic tile

## BROMPTON.

Bring distinction and style to your home with the decorative Brompton range. Versatile patterns in complementary tones recall the Victorian fascination with Medieval geometric floor tiles that were originally used as ecclesiastical ornament.

The designs have been drawn from a selection of nineteenth century inlaid tiles, held in the V&A's unrivalled collection of ceramics. Perfect for a period or contemporary home, the Brompton range can be used alone as individual patterns or combined together to create a patchwork effect on floors and walls.

NEW



**VA04435**  
Abbey Circle  
Wall and Floor  
200x200mm  
G0018D1



**VA04428**  
Godwin Grey  
Wall and Floor  
200x200mm  
G0018D1



**VA04442**  
Pugin Filigree  
Wall and Floor  
200x200mm  
G0018D1





# V&A

— BROUGHT TO YOU BY —  
british ceramic tile

# SERENITY COLLECTION.

Add a touch of pattern to a room with the V&A Serenity Collection. Inspired by the V&A's archive of wallpaper designs, ranging from classic geometrics to elegant foliage, these delicate ceramic tiles have been developed with a unique matte texture to bring a fresh and timeless look to the home.

NEW



**VA04367**  
Larkspur Wall  
248x498mm  
10014



**VA04343**  
Quatrefoil Wall  
248x498mm  
10014



**VA04350**  
Star Trellis Wall  
248x498mm  
10014



# VASANELLO.

Vasanello is a linear vein marble effect design.



**BCT41467**

Cream Wall  
248x398mm  
H0003



**BCT41498**

Taupe Wall  
248x398mm  
H0003



**BCT41474**

Light Grey Wall  
248x398mm  
H0003



**BCT41481**

Dark Grey Wall  
248x398mm  
H0003





# VINTAGE WOOD.

A striking, undulating range of wood effect large format tiles. Vintage Wood has a matt finish and offers a high slip rating of R10 giving peace of mind when using on your floor.

Undulating range of wood effect large format tiles

Peace of mind with a high slip rating of R10



**BCT42242**  
Beige  
Wall and Floor  
225x900mm  
U0008 - R10  
P M



**BCT42259**  
Chestnut  
Wall and Floor  
225x900mm  
U0008 - R10  
P M



**BCT42273**  
Graphite  
Wall and Floor  
225x900mm  
U0008 - R10  
P M



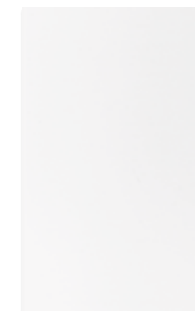
**BCT42266**  
Smoke  
Wall and Floor  
225x900mm  
U0008 - R10  
P M

# EVERYDAY WHITES.

A simple white collection in a range of sizes and finishes. Something for all tastes.



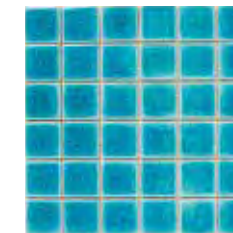
**CAN41806**  
Reflections  
White Wall  
248x398mm  
H0001  
C G



**CAN41790**  
Flat Gloss  
White Wall  
248x398mm  
H0001  
C G

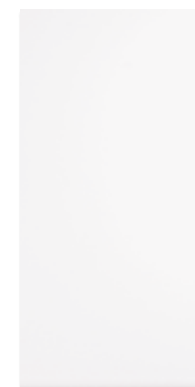


**BCT15499**  
Flat Gloss  
White Wall  
300x600mm  
N0001  
C G

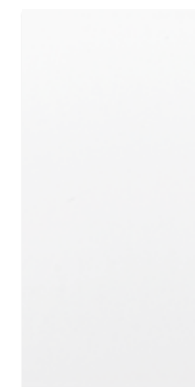


**BCT38450**  
Crackle Blue  
Ceramic Mosaic  
305x305mm  
W0004A  
C G

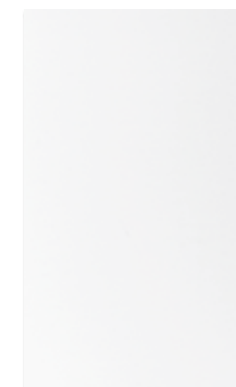
**CAN41813**  
Flat Satin  
White Wall  
248x398mm  
H0001  
C S



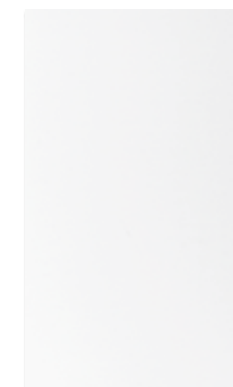
**BCT19922**  
White Gloss Wall  
248x498mm  
I0002  
C G



**BCT19939**  
White Satin Wall  
248x498mm  
I0002  
C S



**BCT21063**  
White Gloss  
Wall  
298x498mm  
M0002  
C G



**BCT21070**  
White Satin  
Wall and Floor  
298x498mm  
M0002  
C S PEI 3

Create an impact with a colourful border





# WILLOW.

Satin finish contemporary ceramic wall tiles with a linear design and matching floors.



**BCT09832**  
White Wall  
248x398mm  
H0002  
C S



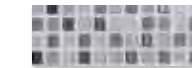
**BCT09856**  
Light Grey Wall  
248x398mm  
H0002  
C S



**BCT09863**  
Dark Grey Wall  
248x398mm  
H0002  
C S



**BCT09849**  
Neutral Wall  
248x398mm  
H0002  
C S



**BCT09900**  
Grey Strip  
248x80mm  
X0003  
S

Mix and match  
colours to create  
a different look



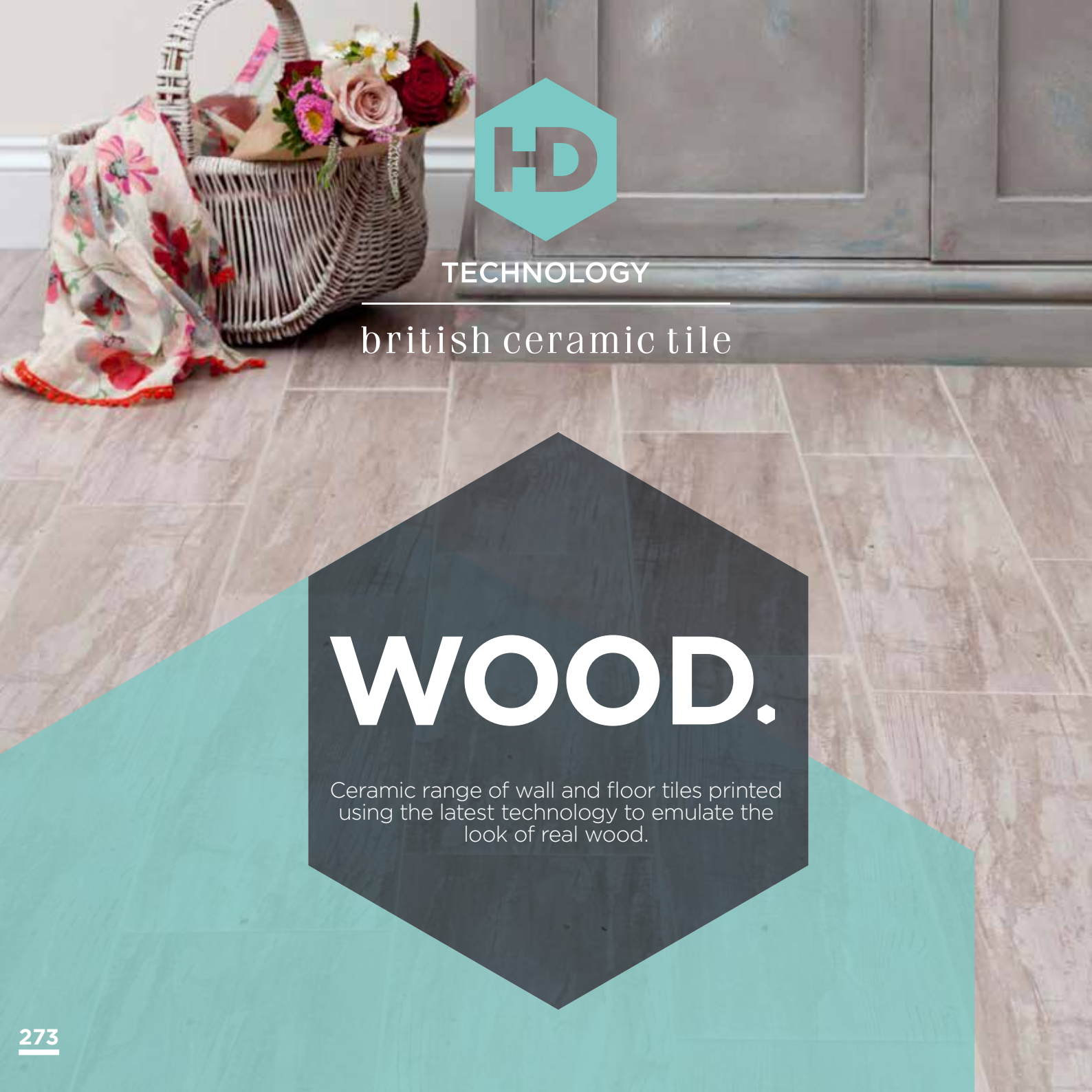
**BCT11644**  
Dark Grey Floor  
331x331mm  
K0003  
C S PEI 3



**BCT12641**  
Neutral Floor  
331x331mm  
K0003  
C S PEI 3



**BCT11668**  
Beige Floor  
331x331mm  
K0003  
C S PEI 3



TECHNOLOGY

british ceramic tile

WOOD.

Ceramic range of wall and floor tiles printed using the latest technology to emulate the look of real wood.



**BCT21216**

Classic Wood Effect  
Brown  
Wall and Floor  
148x498mm  
F0008



**BCT21223**

Classic Wood Effect  
Beige  
Wall and Floor  
148x498mm  
F0008



**BCT21209**

Classic Wood Effect  
Dark Grey  
Wall and Floor  
148x498mm  
F0008



**BCT21230**

Classic Wood Effect  
Light Grey  
Wall and Floor  
148x498mm  
F0008



**BCT21278**

Rustic Wood Effect  
Beige  
Wall and Floor  
148x498mm  
F0008



**BCT21247**

Rustic Wood Effect  
White  
Wall and Floor  
148x498mm  
F0008



**BCT21261**

Rustic Wood Effect  
Dark Grey  
Wall and Floor  
148x498mm  
F0008



**BCT21254**

Rustic Wood Effect  
Light Grey  
Wall and Floor  
148x498mm  
F0008





# TECHNICAL INFORMATION.

## Technically Perfect

At British Ceramic Tile we strive to be faultless in our approach to meeting the strictest of technical standards. We produce in excess of 20,000m<sup>2</sup> of tiles every day and we do so within internationally recognised standards. This is a difficult technical challenge yet we do not compromise on any of these standards.

It is only by manufacturing in such volume, with such consistent technical precision, that we can be sure that we are able to pass on the benefits of our modern manufacturing capability downstream to our specifiers and end users in the form of better value for money in our product.

## BS EN14411

As with most construction products, the main technical characteristics of ceramic tiles are classified by international standards. For ceramic tiles, the relevant harmonised European standard is BS EN 14411. This standard encompasses the BS EN ISO 10545 suite of ceramic tile test methods.

Within EN 14411, ceramic tiles are classified into various groups to reflect the range of production processes and product characteristics. The products manufactured in our factory in Devon are classified as group BIII and are covered by Annex L of the standard. We manufacture to strict levels of quality control throughout the entire production process to ensure all products meet or exceed these requirements. We periodically have the tiles independently assessed by an accredited ceramic test laboratory (LUCIDEON).

## CE Marking and Product Directives

The CE mark is a mandatory conformity mark for many products within the European Economic Area (EEA). By affixing the CE mark, the manufacturer asserts that the item meets all the essential requirements of all applicable harmonised European standards as set out in the relevant European Product Directives. For ceramic tiles, the requirements for CE marking are contained within Annex ZA of EN 14411. This standard meets the requirements of the Mandates M/119 (Floorings) and M/121 (Internal

and external wall and ceiling finishes) given under the EU Construction Products Directive (89/106/EEC).

## Slip Resistance

There is a duty of care upon stakeholders involved in specifying flooring products (manufacturers, architects, distributors, installers etc.) to ensure that the surfaces are fit for purpose and do not pose a safety risk. One of the key considerations is defining its slip resistance. The latest version of EN14411 does not define a single test protocol for assessing slip resistance. Instead several tests have been deemed to be acceptable and it has been left to individual EU member states to determine their favoured test. For the UK, the only slip test recognised by the Health and Safety Laboratory is the pendulum test. Other slip tests e.g. DIN 51130 Ramp or Tortus are not recognised.

For ceramic tiles, the use of the pendulum is covered by BS 7976-2. The test is designed to simulate the action of a slipping foot and uses a weighted swinging arm which contacts the test surface via a standard rubber heel (slider). The slip resistance is calculated by measuring the upswing - the greater the upswing, the lower the slip resistance.

## Abrasion Resistance of Glazed Floor Tiles (PEI)

All floor coverings are exposed to wear due to the abrasive action of dirt particles contained on the soles of the user's footwear. Over prolonged periods this causes the appearance of the tile to change. As applied to glazed ceramic floor tiles, surface abrasion is assessed by BS EN ISO 10545-7.

This test is a compulsory requirement for glazed ceramic tiles intended to be used in flooring applications. This test involves subjecting the glazed tile to an abrasive load and establishing the number of revolutions required to cause visible damage to the glazed surface. The test results are classified into one of six wear resistance groups ranging from class 0 (unsuitable for floors) to class 5 (suitable for intensive pedestrian traffic). The test and the

associated scale were originally developed by the Porcelain Enamel Institute (PEI) and hence the term PEI is frequently encountered in this field. Annex N of EN14411 provides informative guidance on suitable end uses for each wear class. To avoid the risk of premature wear, tiles with a wear resistance classification that meets (or exceeds) that required for the particular application should be used.

Class 0	Not recommended for use on floors.
Class 1	Very light traffic. Soft soled footwear or bare feet without direct access from outside (ensuite bathrooms).
Class 2	Light traffic. Soft soled or normal footwear with very occasional exposure to scratching dirt (living rooms, main bathroom areas, bedrooms).
Class 3	Light to Moderate Traffic. Normal footwear in the presence of small amounts of scratching dirt (any residential area with the possible exception of some entries and kitchens if extremely heavy or abrasive traffic is anticipated).
Class 4	Moderate to Heavy Traffic with some scratching dirt (entrances, commercial kitchens, hotels, exhibitions).
Class 5	Heavy traffic over sustained periods with some scratching dirt (shopping centres, airport concourses, hotel foyers).

BS EN ISO 10545-7 and the associated scale are only applicable to glazed tiles. Unglazed floor tiles, e.g. through body porcelain are subjected to a different wear test, namely BS EN10545-6 which measures resistance to deep abrasion.

## Tile Fixing Recommendation

The fixing of tiles to walls and floors is governed by several British Standards, notably the BS 5385 series and BS 8000-11. A list of the individual standards is given here:

## Fixing standards

BS 5385-1 Wall and floor tiling. Design and installation of ceramic, natural stone and mosaic wall tiling in normal internal conditions. Code of practice

BS 5385-2 Wall and floor tiling. Design and installation of external ceramic and mosaic wall tiling in normal conditions. Code of practice

BS 5385-3 Wall and floor tiling. Design and installation of internal and external ceramic floor tiles and mosaics in normal conditions. Code of practice

BS 5385-4 Wall and floor tiling. Design and installation of ceramic and mosaic tiling in special conditions. Code of practice

BS 5385-5 Wall and floor tiling. Design and installation of terrazzo, natural stone and agglomerated stone tile and slab flooring. Code of practice

BS 8000-11.1 Workmanship on building sites. Code of practice for wall and floor tiling. Ceramic tiles, terrazzo tiles and mosaics

BS 8000-11.2 Workmanship on building sites. Code of practice for wall and floor tiling. Natural stone tiles

A list of standards relating to adhesives and grout is listed here:

BS EN 12004 Adhesives for tiles - Requirements, evaluation of conformity, classification and designation

BS EN 13888 Grout for tiles — Requirements, evaluation of conformity, classification and designation

The nature of the background should always be a primary consideration, since it determines the type of adhesive to be used and whether any intermediate substrate or other preparatory treatment is required before tiling can commence. Factors relating to the background to be considered are numerous and include the type of material, condition, straightness, porosity, presence of soluble salts etc. Early consideration should also be given to the provision of movement joints in order to allow stresses that result from movement of the background, e.g. drying shrinkage, thermal changes and moisture changes to be dissipated.

We also recommend that tiles are separated with minimum tile joints of 2mm for wall tiles and 3mm for floor tiles.

Ceramic tiles can be fixed using cementitious, dispersion or reaction resin adhesives that are suitable for the required application and the type of tile type to be fixed (BIII, BIIa etc.). The fixing method to be used varies depending on the type of background, the nature of the adhesive and the anticipated service conditions of the installation. Therefore, the recommendations of the relevant British Standard and the specific instructions of the adhesive manufacturers should be followed.

The performance requirements of adhesives are specified in BS EN 12004.

The performance requirements of grouts are specified in BS EN 13888. It should be noted that some coloured grouts can cause staining on certain glazed tiles. Following the recommendations given in BS 5385, we recommend that when using coloured grouts, a loose sample should first be tested to ensure the tile does not absorb pigment into its surface.

## Cleaning & Maintenance

With proper care and attention, a correctly installed, good quality ceramic tile should give many years of trouble-free service.

The Tile Association "Cleaning & Maintenance of Ceramic Tiles" publication recommends:

Hard water deposits, soap, scum and body oils build up and, therefore thorough and frequent cleaning is essential.

The best way to prevent build up of soap, scum and body oil deposits is to use a plastic scouring pad with the appropriate cleaner when cleaning. Acidic based proprietary cleaning materials should not be used with ceramics, porcelain or natural stone.

Wet rooms with inadequate ventilation to remove excess moisture may have fungal growth on the tiles or grout. This can be controlled by wiping with a dilute solution of bleach and leaving it for five minutes before cleaning off. If the fungal growth is not completely removed the bleach may be re-applied and scrubbed with a brush to loosen. The surface should always be rinsed thoroughly with clean water. Bleach should always be used with caution and never mixed with other chemicals. Adequate ventilation should be provided when using these materials.

## DDA Requirements

When specifying ceramic wall and floor tiles, the main consideration relating to the Disability Discrimination Act 2005 is colour contrast. Having visual contrast between adjacent elements of a building (e.g. doors, walls, stair edging) allows partially sighted people to differentiate between these elements.

Compliance with this Act can be achieved by following the guidance in either the Building Regulations 2004 Part M or BS 8300.

Both of these documents refer to Light Reflectance Values (LRV) to denote colour contrast. LRV is a measure of the total quantity of visible light reflected by a surface. It is measured on a scale of 0 to 100, with 0 being a perfect absorbing black and 100 being a perfect reflecting white.

In practice a typical black matt tile would have a score of around 5, while a pure white gloss tile would typically score around 90. All other tile colours fit in between these two extremes. The larger the difference between the LRVs of adjacent surfaces the greater the visual contrast is and the easier it is for someone with impaired vision to

perceive the difference.

In order to ensure buildings meet the DDA requirements, Part M: 2004 requires an LRV difference between adjacent surfaces of at least 30 points. The latest BS 8300 guidance (incorporating Amendment 1 June 2005) states that there is research-based evidence that a difference of about 20 points may be an acceptable minimum for large areas. For wall and floors tiles, we recommend an LRV difference of 20 points (minimum) and where possible at least 30 points.

## Shading

Tiles from British Ceramic Tile are manufactured to the highest British and European standards. During the manufacturing of ALL ceramic tiles, some variations in shade and pattern can occur, however we are confident that the tone will be consistent. We recommend that sufficient tiles are purchased at one time to complete the jobs. Do not fix tiles if you cannot obtain an acceptable blend for any reason.

## Modular Metric

Our tiles are modular metric. This means that the tile Size (mm)s have been designed to accommodate the grout gap in the module Size (mm). This makes it easy to calculate the area that will be covered by the tiles after they have been fixed. Following the recommendations given in BS 5385, our wall and floor tiles have been designed for 2mm and 3mm grout joints respectively. As an example, our equivalent of a 200 x 250mm wall tile actually measures 198 x 248 mm and one box of twenty tiles will produce 1 m<sup>2</sup> of tiled wall when fixed using 2mm spacers.

## General

The product images shown in this catalogue are as accurate as the limitations of the printing process will allow. Please refer to actual product samples before purchasing.

Every effort has been made to ensure the accuracy of the information given in this literature. In the interests of progress, however, British Ceramic Tile reserves the right to change specifications and availability without prior notice.



Dry Pressed Tiles, Group BIII, E>10%

DIMENSIONAL PROPERTIES

	TEST NORM	NORM STANDARD VALUE	BRITISH CERAMIC TILE VALUE
Length and Width	EN ISO 10545-2	+/- 0.5% to a max +/- 2.0mm	Complies with standard
Thickness	EN ISO 10545-2	+/- 10% to a max +/- 0.5mm	Complies with standard
Side Straightness	EN ISO 10545-2	+/- 0.3% to a max +/- 1.5mm	Complies with standard
Rectangularity	EN ISO 10545-2	+/- 0.5% to a max +/- 2.0mm	Complies with standard
Surface Flatness	EN ISO 10545-2	Centre & Edge + 0.5%, to -0.3% to a max + 2.0 to - 1.5mm Warpage +/- 0.5%to a max +/- 2.0mm	Complies with standard

PHYSICAL PROPERTIES

	TEST NORM	NORM STANDARD VALUE	BRITISH CERAMIC TILE VALUE
Slip Resistance	BS7976	Not applicable	-
Breakage Charge	EN ISO 10545-4	Thickness ≥ 7.5mm, >600N:< 7.5mm>200N	Complies with standard
Modulus of Rupture	EN ISO 10545-4	Thickness ≥ 7.5mm, Average Min 12N/mm <sup>2</sup> Thickness <7.5mm Individual min 15N/mm <sup>2</sup>	Complies with standard
Water Absorption	EN ISO 10545-3	>10%	Complies with standard
Resistance to Abrasion	EN ISO 10545-7	Not applicable	-
Resistance to Thermal Shock	EN ISO 10545-9	Manufacturer's Declaration	Resists
Crazing Resistance	EN ISO 10545-11	Required	Resists
Frost Resistance	EN ISO 10545-12	Not applicable	-

CHEMICAL PROPERTIES

	TEST NORM	NORM STANDARD VALUE	BRITISH CERAMIC TILE VALUE
Resistance to Acids & Alkalis	EN ISO 10545-13	Manufacturer's Declaration	Complies with standard
Resistance to Household Cleaning Products	EN ISO 10545-13	Minimum Class B	Complies with standard
Resistance to Staining	EN ISO 10545-14	Minimum Class 3	Complies with standard
Release of Lead and Cadmium	EN ISO 10545-15 <small>SI2006 No3179. The Ceramic Articles in Contact With Food (England) Regulations 2006</small>	Manufacturer's Declaration	Complies with standard





Glazed porcelain tiles- Class Bla

DIMENSIONAL PROPERTIES

	TEST NORM	NORM STANDARD VALUE	BRITISH CERAMIC TILE VALUE
Length and Width	EN ISO 10545-2	+/- 0.6% to a max +/- 2.0mm	Complies with standard
Thickness	EN ISO 10545-2	+/- 5% to a max +/- 0.5mm	Complies with standard
Side Straightness	EN ISO 10545-2	+/- 0.5% to a max +/-1.5mm	Complies with standard
Rectangularity	EN ISO 10545-2	+/- 0.6% to a max +/-2.0mm	Complies with standard
Surface Flatness	EN ISO 10545-2	+/- 0.5% to a max +/-2.0mm	Complies with standard

PHYSICAL PROPERTIES

	TEST NORM	NORM STANDARD VALUE	BRITISH CERAMIC TILE VALUE
Slip Resistance	BS7976-2	Manufacturer's Declaration (Pendulum Test)	Complies with standard
Breakage Charge	EN ISO 10545-2	Thickness ≥ 7.5mm, >1300N: <7.5mm, >700N	Complies with standard
Modulus of Rupture	EN ISO 10545-4	>35N/mm²	Complies with standard
Water Absorption	EN ISO 10545-3	≤0.5%	Complies with standard
Resistance to Abrasion	EN ISO 10545-7	Manufacturer's Declaration	Complies with standard
Resistance to Thermal Shock	EN ISO 10545-9	Manufacturer's Declaration	Resists
Crazing Resistance	EN ISO 10545-11	Required	Resists
Frost Resistance	EN ISO 10545-12	Manufacturer's Declaration	Complies with standard

CHEMICAL PROPERTIES

	TEST NORM	NORM STANDARD VALUE	BRITISH CERAMIC TILE VALUE
Resistance to Acids & Alkalis	EN ISO 10545-13	Manufacturer's Declaration	Complies with standard
Resistance to Household Cleaning Products	EN ISO 10545-13	Minimum Class B	Complies with standard
Resistance to Staining	EN ISO 10545-14	Minimum Class 3	Complies with standard
Release of Lead and Cadmium	EN ISO 10545-15 <small>SI2006 No3179: The Ceramic Articles In Contact With Food (England) Regulations 2006</small>	Manufacturer's Declaration	Complies with standard

# british ceramic tile

For further details contact your ASM or Customer Services on:

**+44 (0) 845 055 1275**

**[enquiries@britishceramictile.com](mailto:enquiries@britishceramictile.com)**

Heathfield, Newton Abbot, Devon. TQ12 6RF

The Hub, Summit House, Bradford Road, Cleckheaton. BD19 6BW



[britishceramictile.com](http://britishceramictile.com)