



**Silver Birch**  
Dryback: 50630 16  
Click: 50634 16

**Magnet**  
Dryback: 506292  
Click: 506332



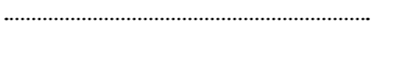
**Nimbus Cloud**  
Dryback: 506295  
Click: 506335

# Technical Data

| Plank Dimensions              |                                | Tile Dimensions                                      |                           |
|-------------------------------|--------------------------------|--|---------------------------|
| Dryback Plank size            | 184.2mm x 1219.2mm (7¼" x 48") | Dryback Tile size                                    | 305mm x 610mm (12" x 24") |
| Dryback Pack size             | 3.37m <sup>2</sup>             | Dryback Pack size                                    | 2.79m <sup>2</sup>        |
| Click plank size              | 180mm x 1230mm (7" x 48.5")    | Click tile size                                      | 305mm x 610mm (12" x 24") |
| Click pack size               | 1.77m <sup>2</sup>             | Click pack size                                      | 1.86m <sup>2</sup>        |
| Standard                      |                                | Construction Specifications                          |                           |
| Overall Thickness             |                                | 2.5mm (Click 4.5mm)                                  |                           |
| Thickness of wear layer EN429 |                                | 0.55mm + Polyurethane                                |                           |
| Weight per sq m EN430         |                                | 4520 g/m <sup>2</sup> (Click 9000 g/m <sup>2</sup> ) |                           |
| Wear Group Classification     |                                | EN660-1: Group T                                     |                           |
| Residual Indentation          |                                | EN433 0.05mm   |                           |
| Castor Chair Resistance       |                                | EN425: Type W   EN12529                              |                           |
| Chemical Resistance           |                                | EN423 Yes  |                           |
| Thermal Resistance            |                                | EN 12667:2001 0.036m <sup>2</sup> K/W                |                           |
| Thermal Conductivity          |                                | EN 12667:2001 0.076 W/(m·K)                          |                           |
| Fire Resistance               |                                | EN13501-1:Bf-s1                                      |                           |
| Slip Resistance               |                                | DIN 51130 Class R10                                  |                           |
| Light Fastness                |                                | ISO 105 B02 Level ≥6 Method A                        |                           |
| Dimensional Stability         |                                | EN434 ≤0.12%   |                           |
| Electrostatic Properties      |                                | EN1815 <2.0 KV                                       |                           |
| Sound Reduction               |                                | ISO 717-2 5dB (Click 8dB)                            |                           |
| Determination of Impact Sound |                                | E492-09 IIC=63                                       |                           |
| Underfloor heating            |                                | 27° C ✓  |                           |
| CE Marking                    |                                | EN 14041:2004 +AC:2005+AC:2006                       |                           |



Your Independent Retailer:



CE | Distinctive Flooring Ltd  
Units 8&9 NP13 3JW 12





# Universal Collection

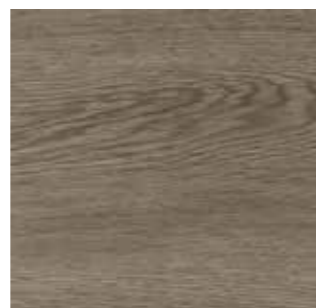
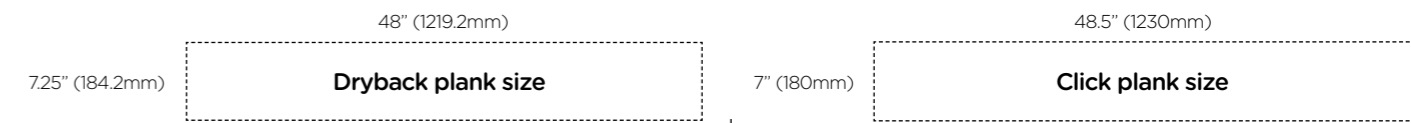
Available as either dry back or click product, the Universal Collection offers you everything you would expect from a Luxury Vinyl Tile.

Hard wearing with a 0.55mm wear layer and long lasting with a 15 year residential and 10 year commercial warranty. It's warm underfoot and super easy to keep clean. The classic designs of the wood planks and stone tiles in this range mean there is something for every location.



Cover: **FEATHER GREY**, Dryback: 506297 Click: 506337

## Wood



**Flint Grey**  
Dryback: 506291 Click: 506331



**Magnet**  
Dryback: 506292 Click: 506332



**Falcon**  
Dryback: 506293 Click: 506333



**Chateau Grey**  
Dryback: 506294 Click: 506334



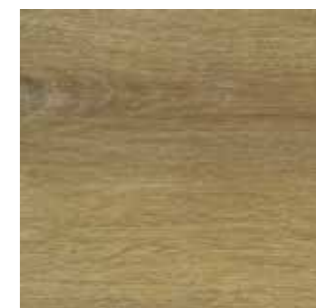
**Nimbus Cloud**  
Dryback: 506295 Click: 506335



**Whitecap Grey**  
Dryback: 506296 Click: 506336



**Feather Grey**  
Dryback: 506297 Click: 506337



**Ginger**  
Dryback: 506298 Click: 506338



**Oyster**  
Dryback: 506299 Click: 506339



**Smoke**  
Dryback: 5062910 Click: 5063310



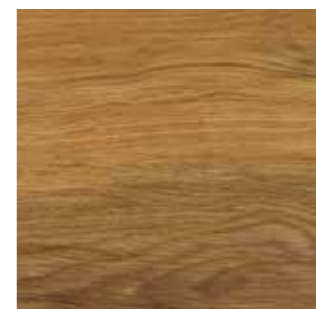
**Latte**  
Dryback: 5062911 Click: 5063311



**Shitake**  
Dryback: 5062912 Click: 5063312



**Sesame**  
Dryback: 5062914 Click: 5063314



**Almond Buff**  
Dryback: 5062915 Click: 5063315

## Stone



**Silver Birch**  
Dryback: 50630 16 Click: 50634 16



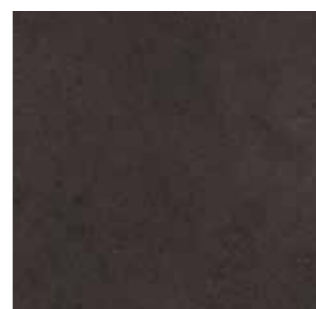
**Dove**  
Dryback: 50630 17 Click: 50634 17



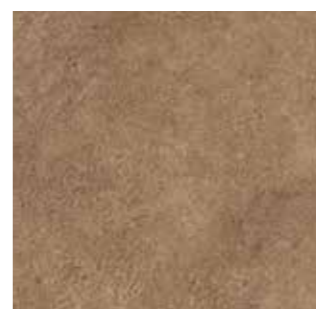
**Titanium**  
Dryback: 50630 18 Click: 50634 18



**Driftwood**  
Dryback: 50630 19 Click: 50634 19



**Smoked Pearl**  
Dryback: 50630 20 Click: 50634 20



**White Pepper**  
Dryback: 50630 21 Click: 50634 21

Colours may vary from actual product colour. We strongly advise you view any product range in-store or order a free sample at: [www.universallvt.co.uk](http://www.universallvt.co.uk)